

MILLER precast concrete

Product Catalog

We deliver when you need it. On your schedule, not ours!

Steve Koons, owner

Cell 610-496-0483

Jared Koch, operations manager

610-594-1016

www.MillerPrecastConcrete.com

Inlets & Catch Basins

PennDOT type C concrete inlet top	page 2
PennDOT type M concrete inlet top	3
PennDOT type S concrete inlet top	4
Slant curb concrete inlet top	5
Rolled Curb concrete inlet top	6
Precast inlet box 24"x45" for PennDot inlet top	7
Precast inlet box 38"x45" for PennDOT inlet top	8
2'x6' Type C inlet top	9
2'x6' Type M inlet top	10
Precast inlet box 2'x6'	11
Precast inlet box 48"x48" for PennDOT inlet tops	12
12"x12" Catch basin	13
12"x18" Catch Basin	14
21"x21" Catch Basin	15
24"x24" Catch Basin	16
24"x48" Catch Basin	17

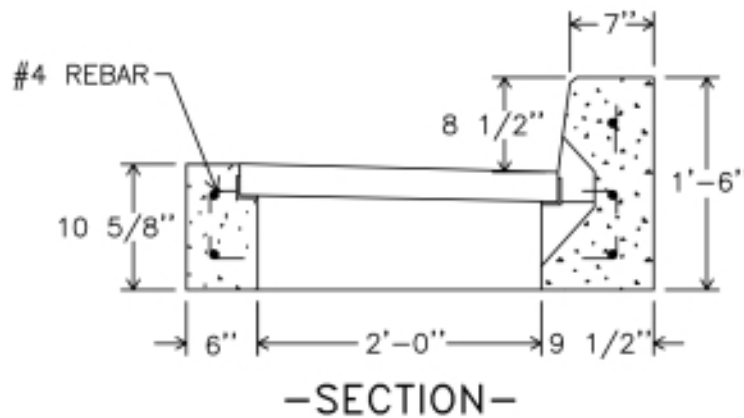
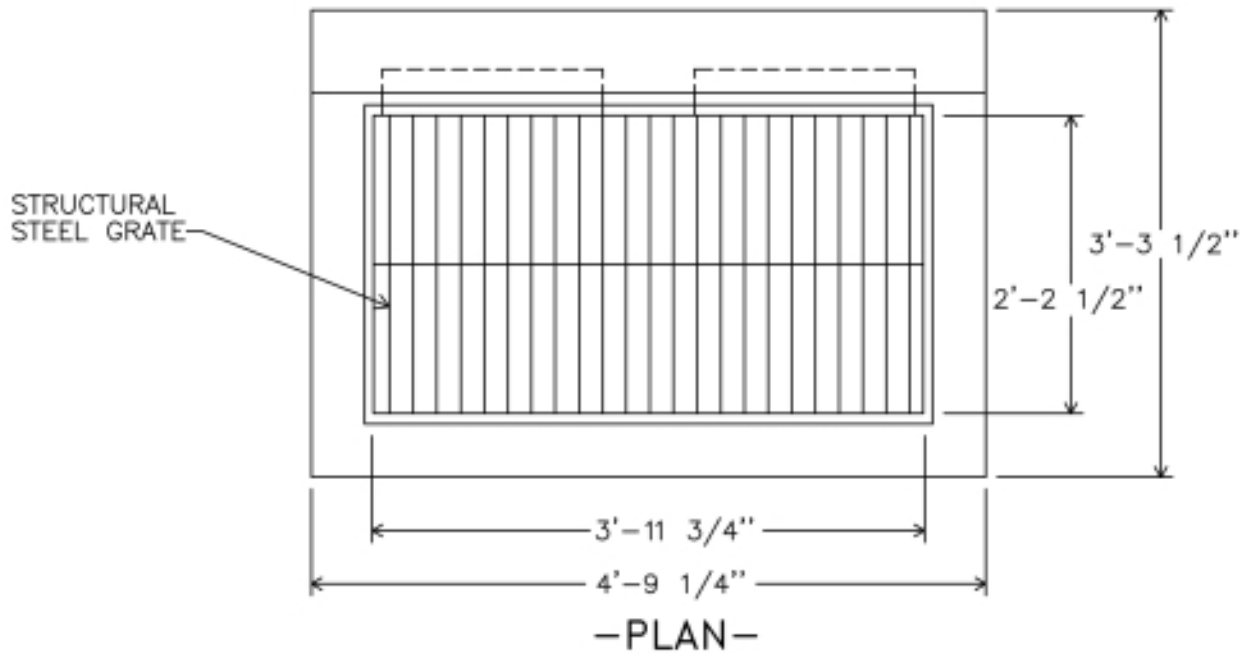
Outlet Structures

Type D-W endwall maximum pipe size - 21" C.M.P	18
Type D-W endwall maximum pipe size - 36" C.M.P	19
Type D-W endwall maximum pipe size - 48" C.M.P	20
Type D-W endwall w/adjustable sizes	21
Type D-W endwall w/blocks and trash rack	22
Type D-W endwall w/ trash rack	23
Type D-W endwall w/trash screen	24
Type D Precast endwall	25
Precast Stilling Basin - 18" max. pipe size	26
Precast Stilling Basin - 30" pipe size	27
Energy Dissipator - 15" Max. pipe size	28
Energy Dissipator - 27" and 30" pipe size	29

Trench Drains

Precast Concrete Rain Drain	30
Precast Concrete Trench Drains with 14" wide grating	31

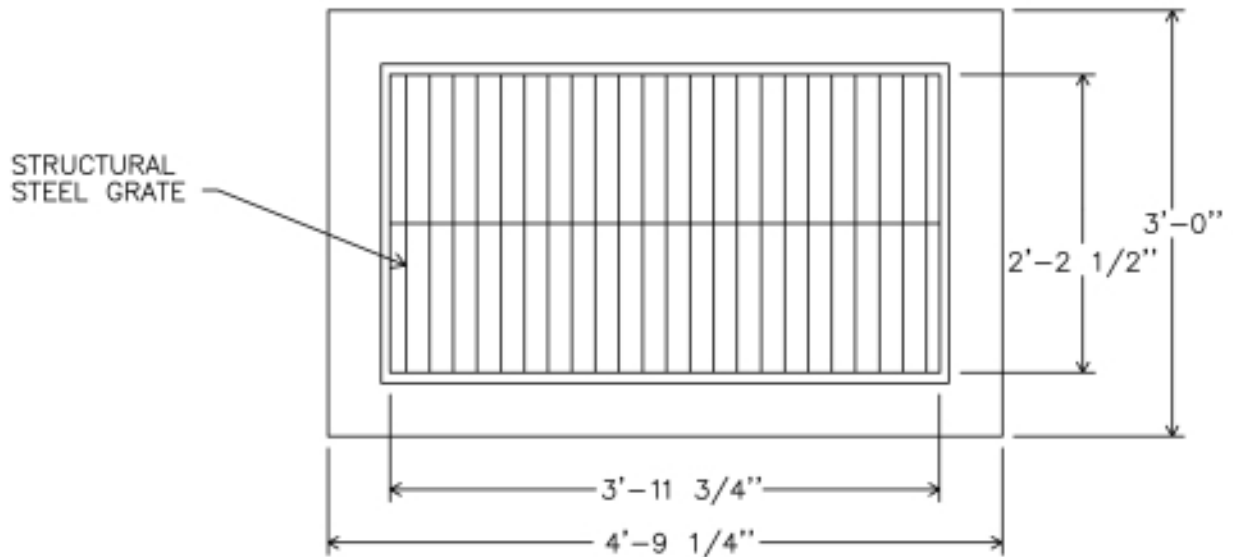
**These are the most requested products. Other items available,
 contact us for ALL YOUR PRECAST NEEDS**



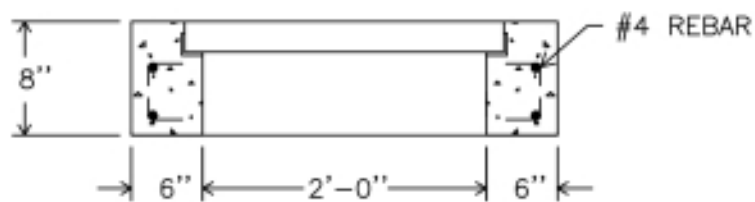
ALSO AVAILABLE WITH
6", 7" AND 10" CURB HEIGHTS

PENNDOT TYPE C
CONCRETE INLET TOP

DWG. I-1



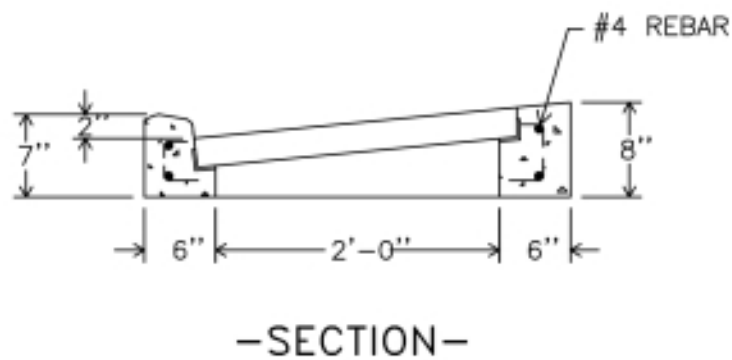
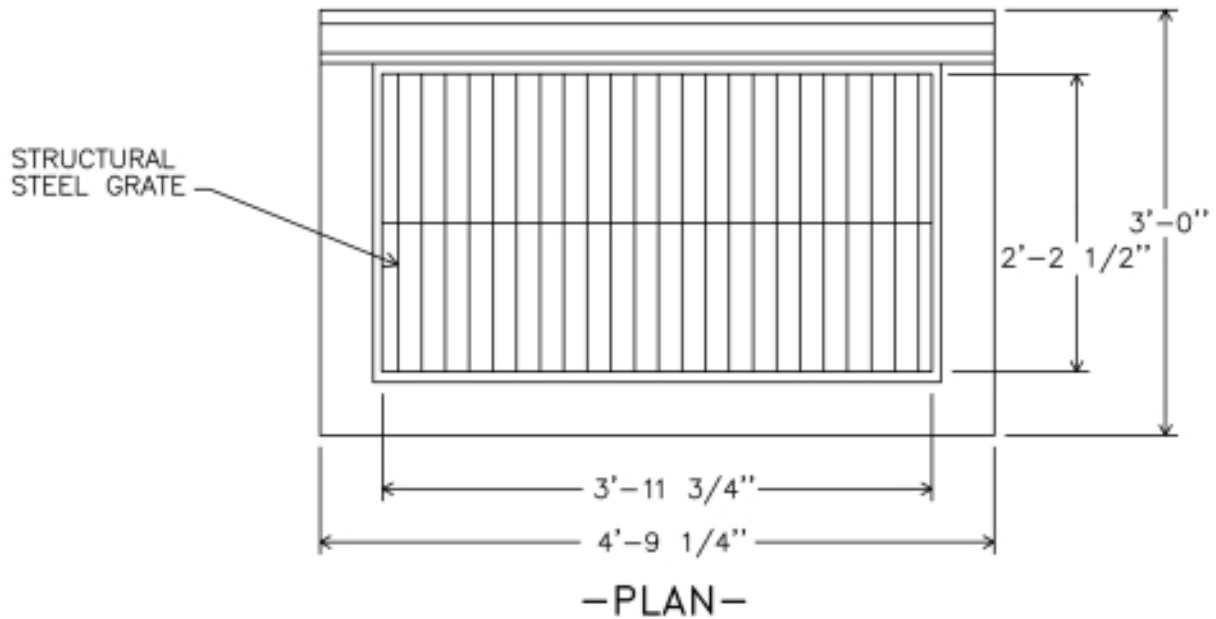
-PLAN-



-SECTION-

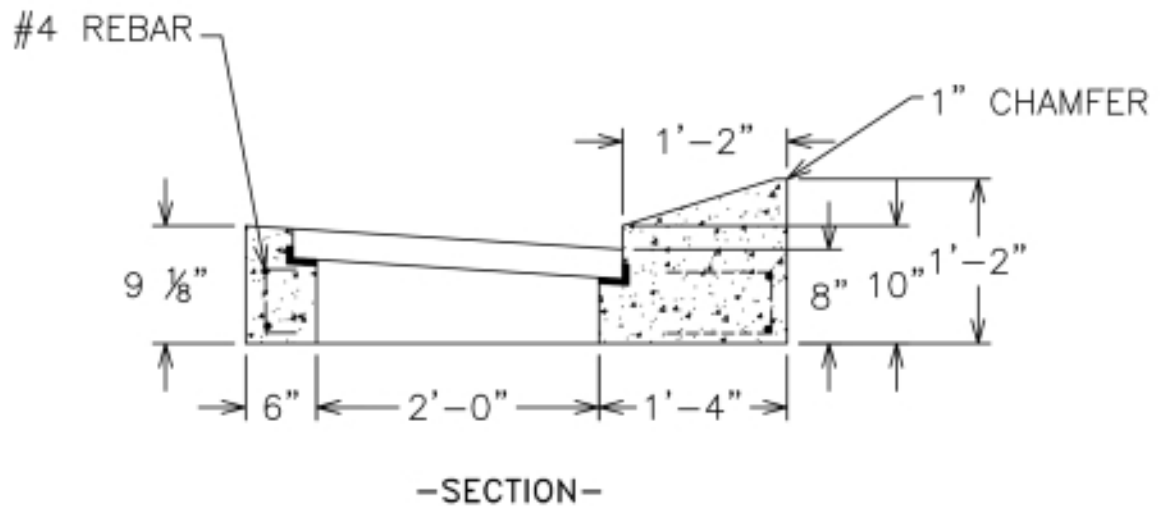
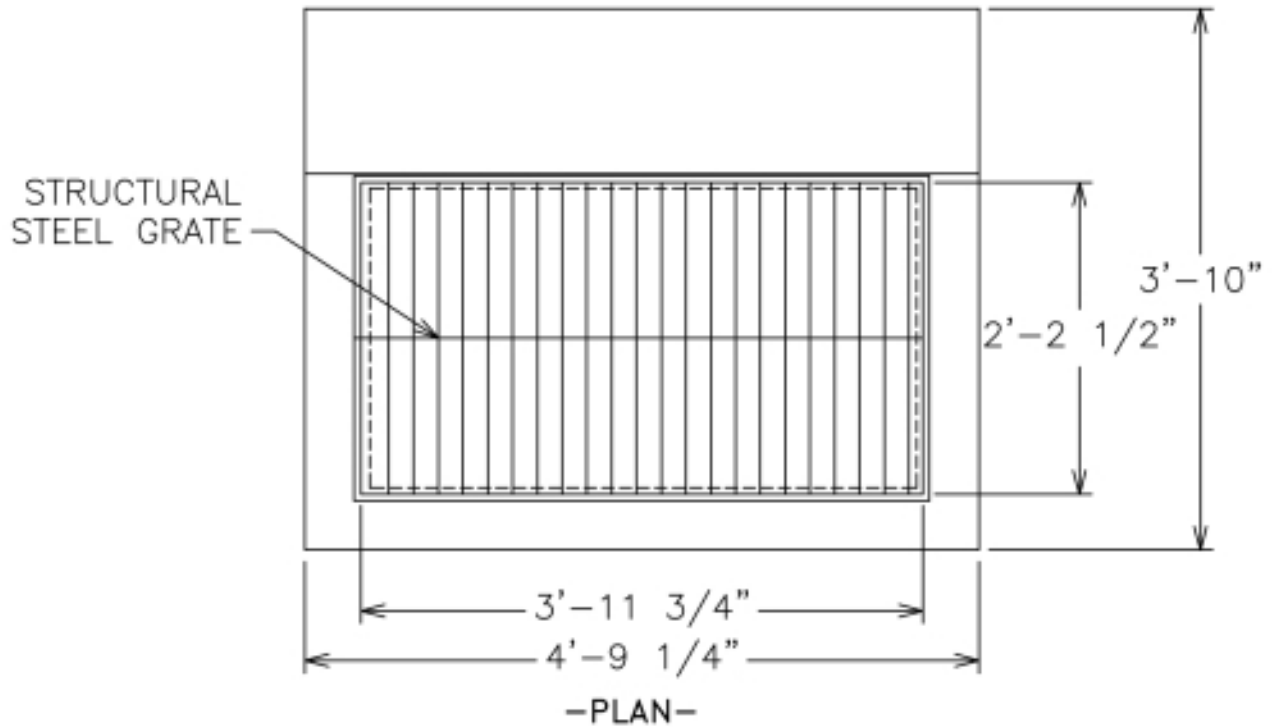
PENNDOT TYPE M
CONCRETE INLET TOP

DWG. I-2



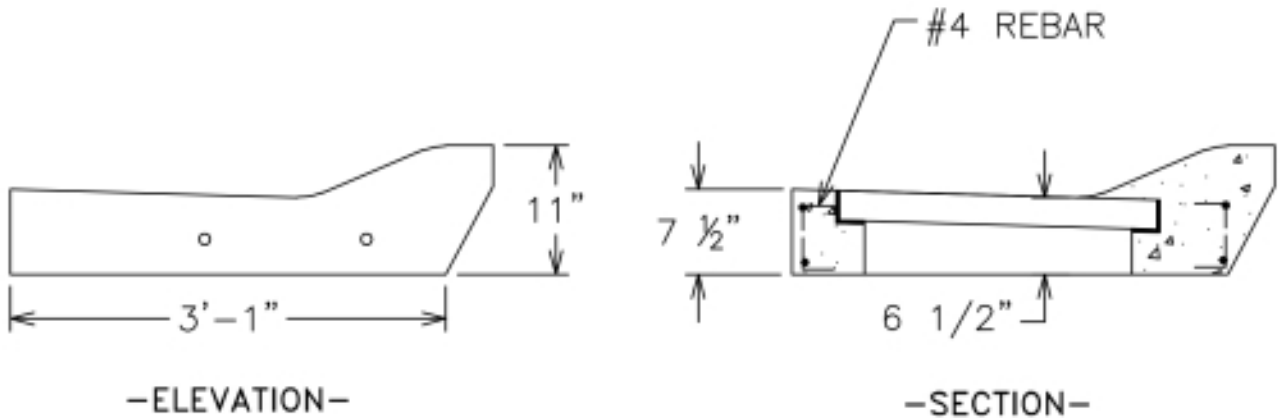
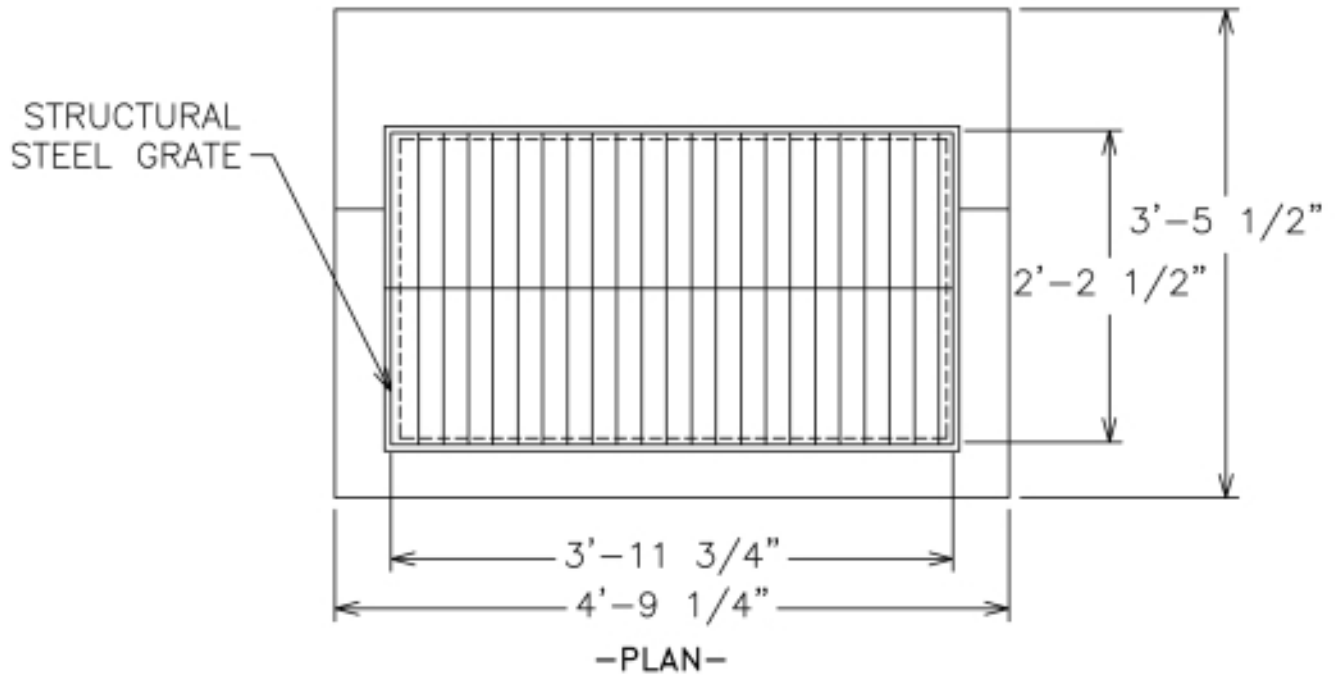
PENNDOT TYPE S
CONCRETE INLET TOP

DWG. I-3



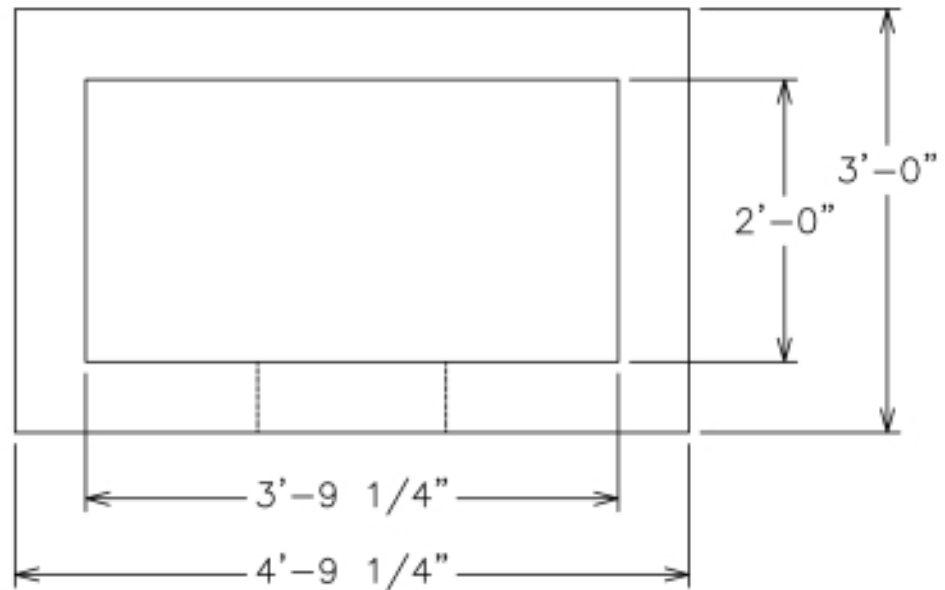
SLANT CURB
CONCRETE INLET TOP

DWG. I-4

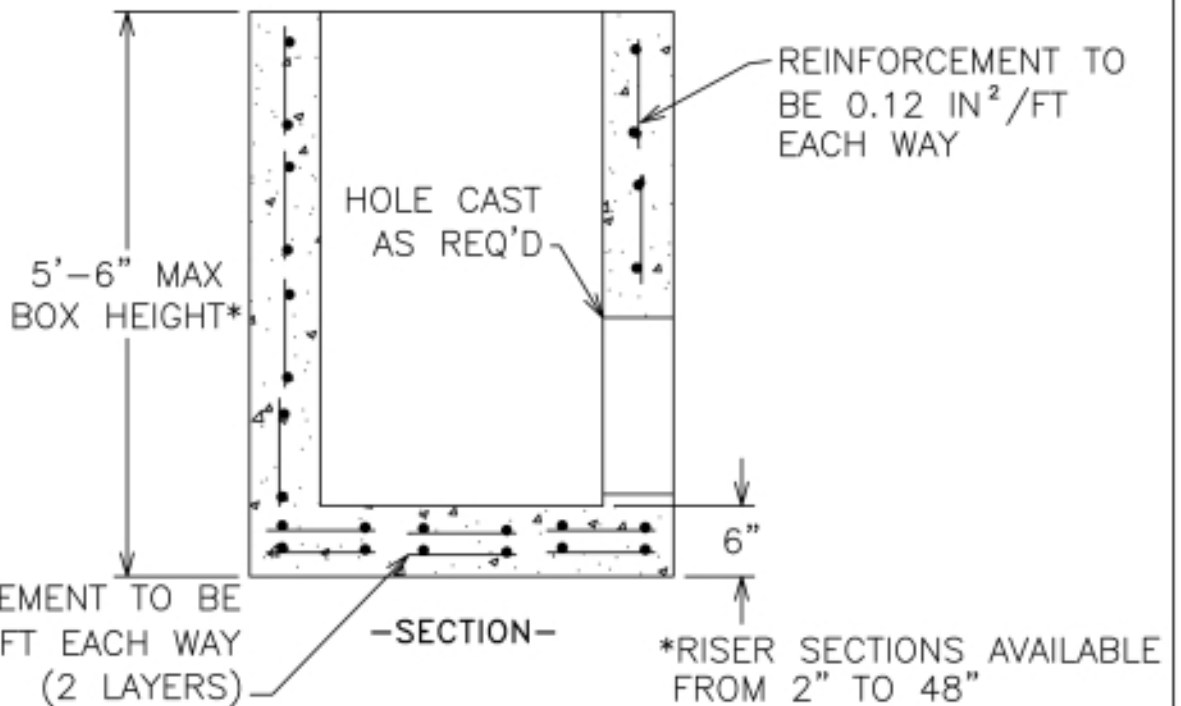


ROLLED CURB
CONCRETE INLET TOP

DWG. 1-5



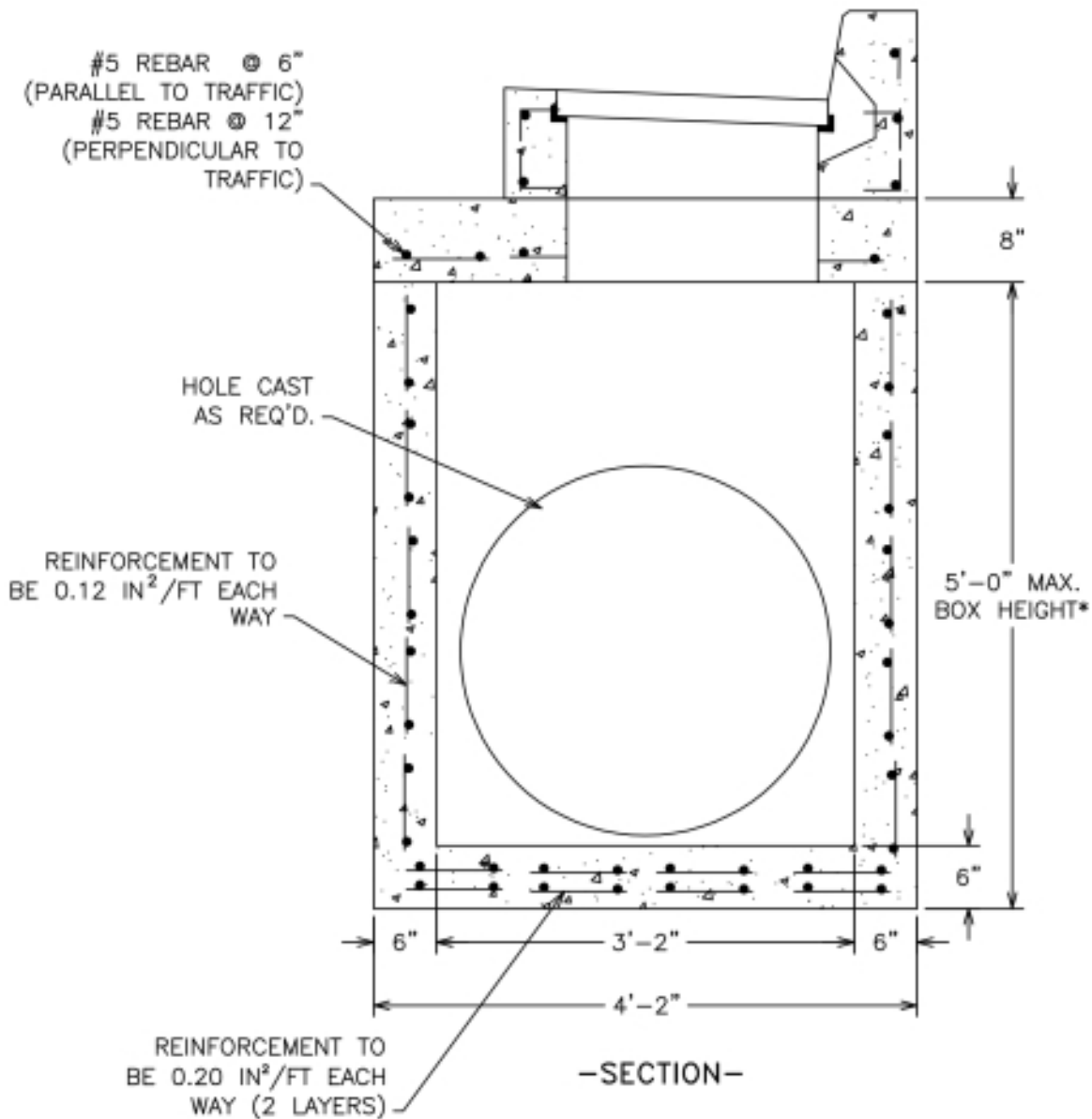
-PLAN-



-SECTION-

PRECAST INLET BOX 24" X 45"
FOR PENNDOT INLET TOPS

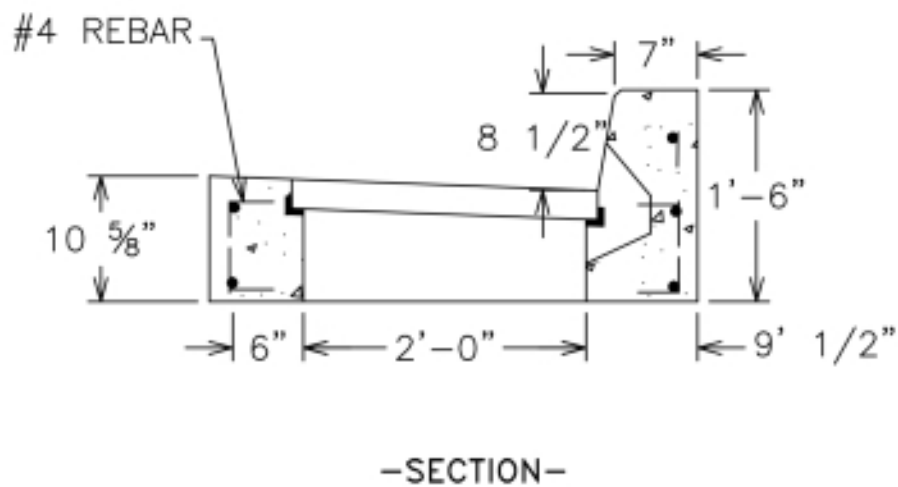
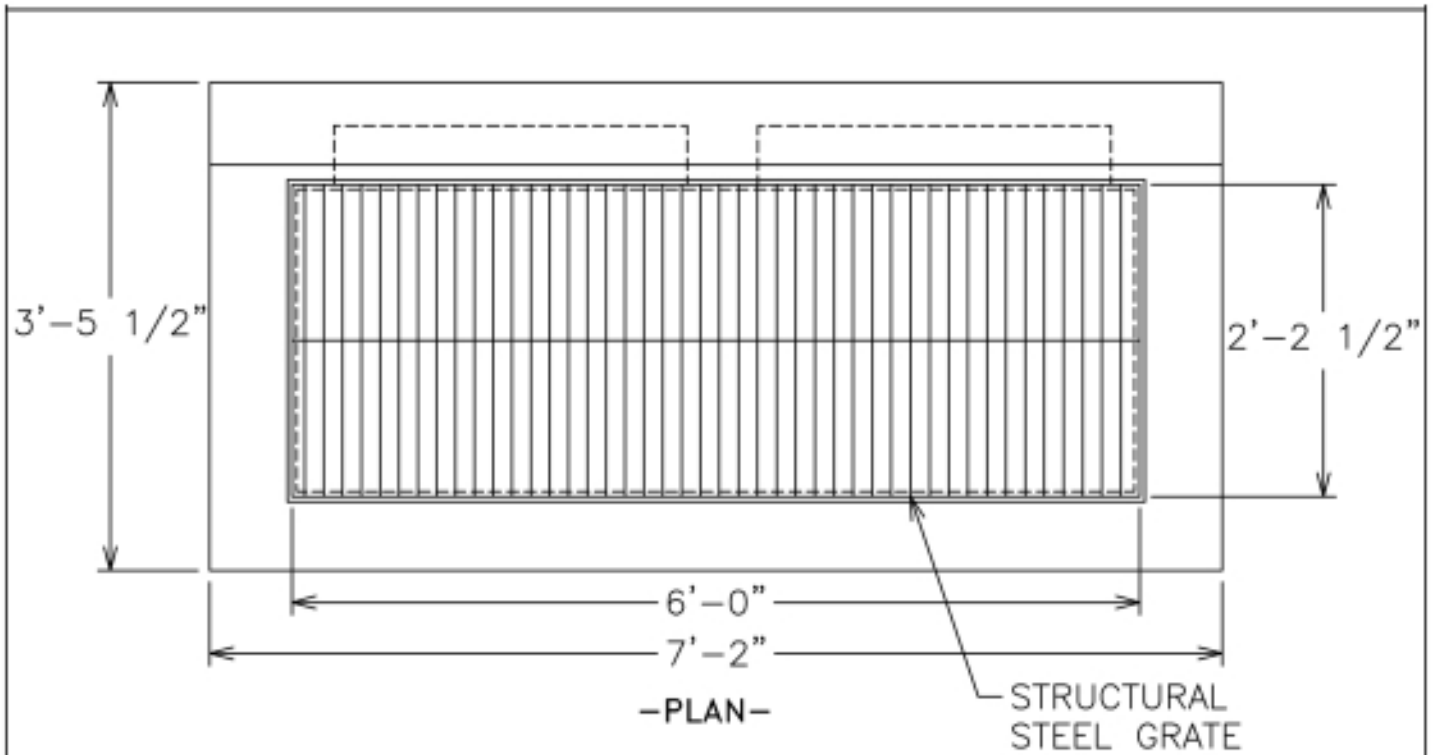
DWG. 1-8



*RISER SECTIONS AVAILABLE

PRECAST INLET BOX 38" X 45"
 FOR PENNDOT INLET TOPS

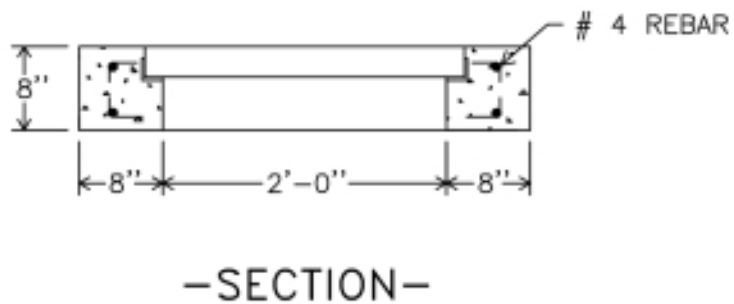
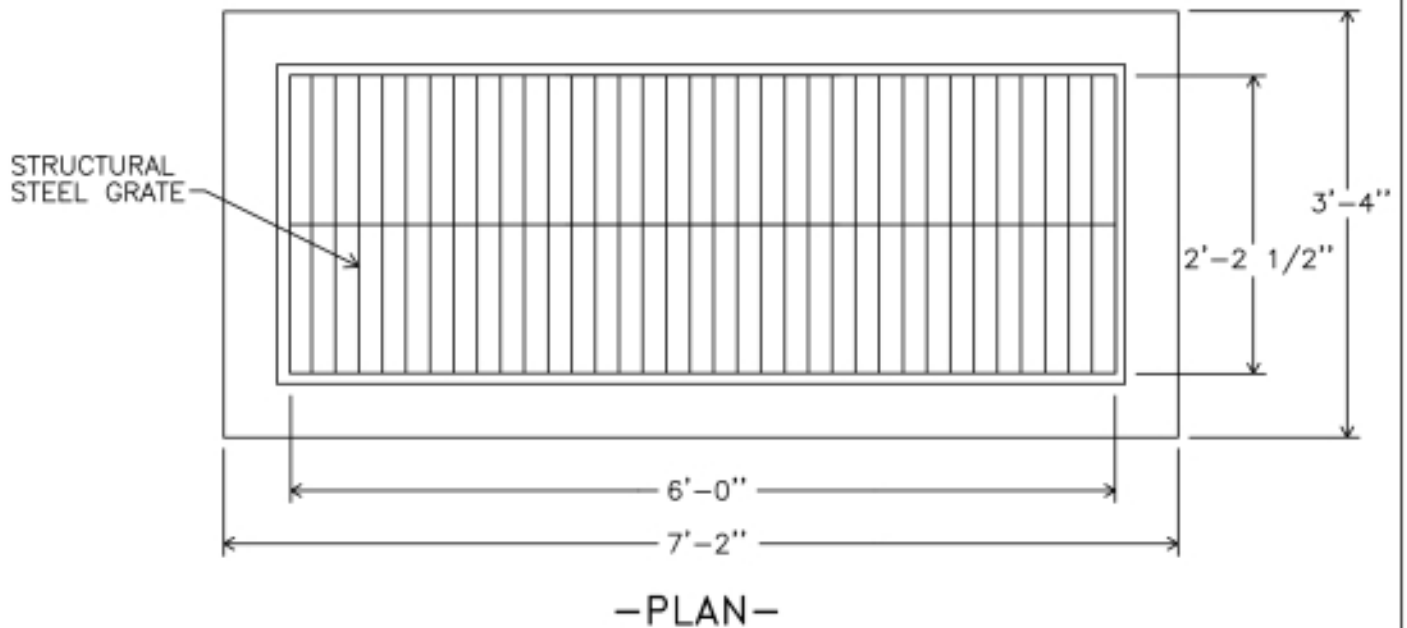
DWG. I-10



*ALSO AVAILABLE WITH
7" & 10" CURB HEIGHTS

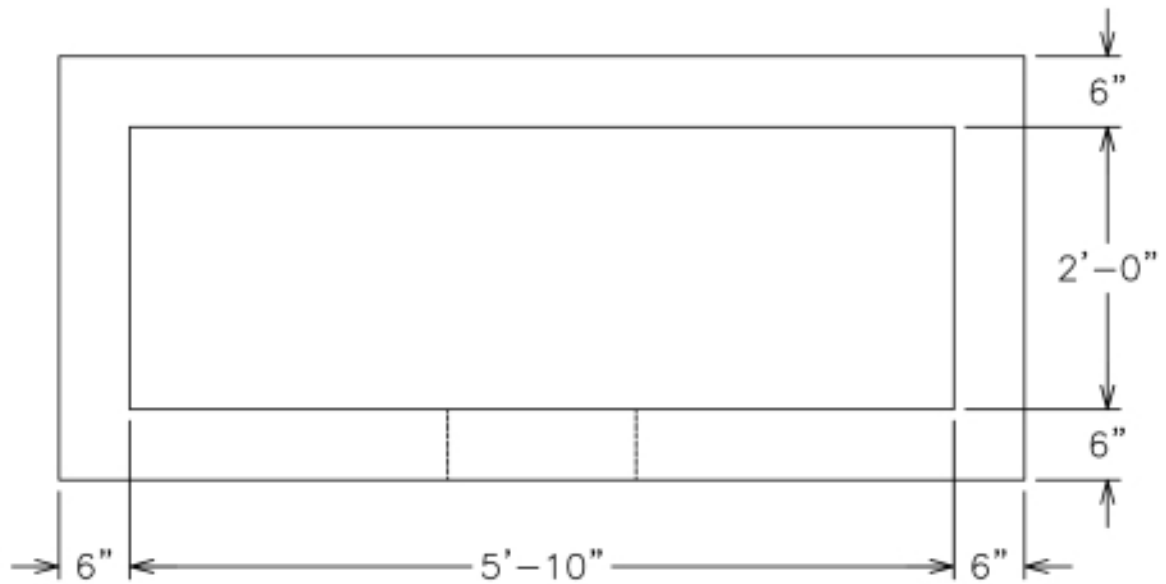
2' X 6' TYPE C INLET TOP

DWG. I-12

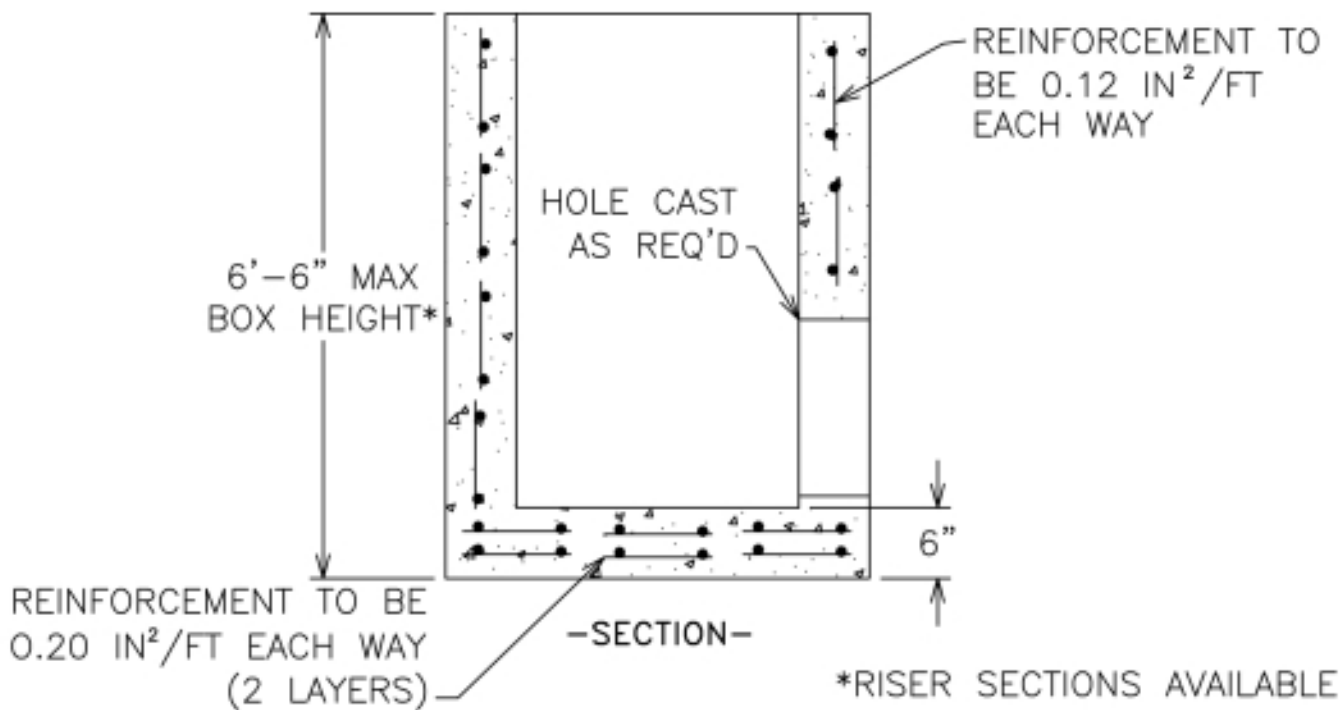


2' X 6' TYPE M INLET TOP

DWG. I-13

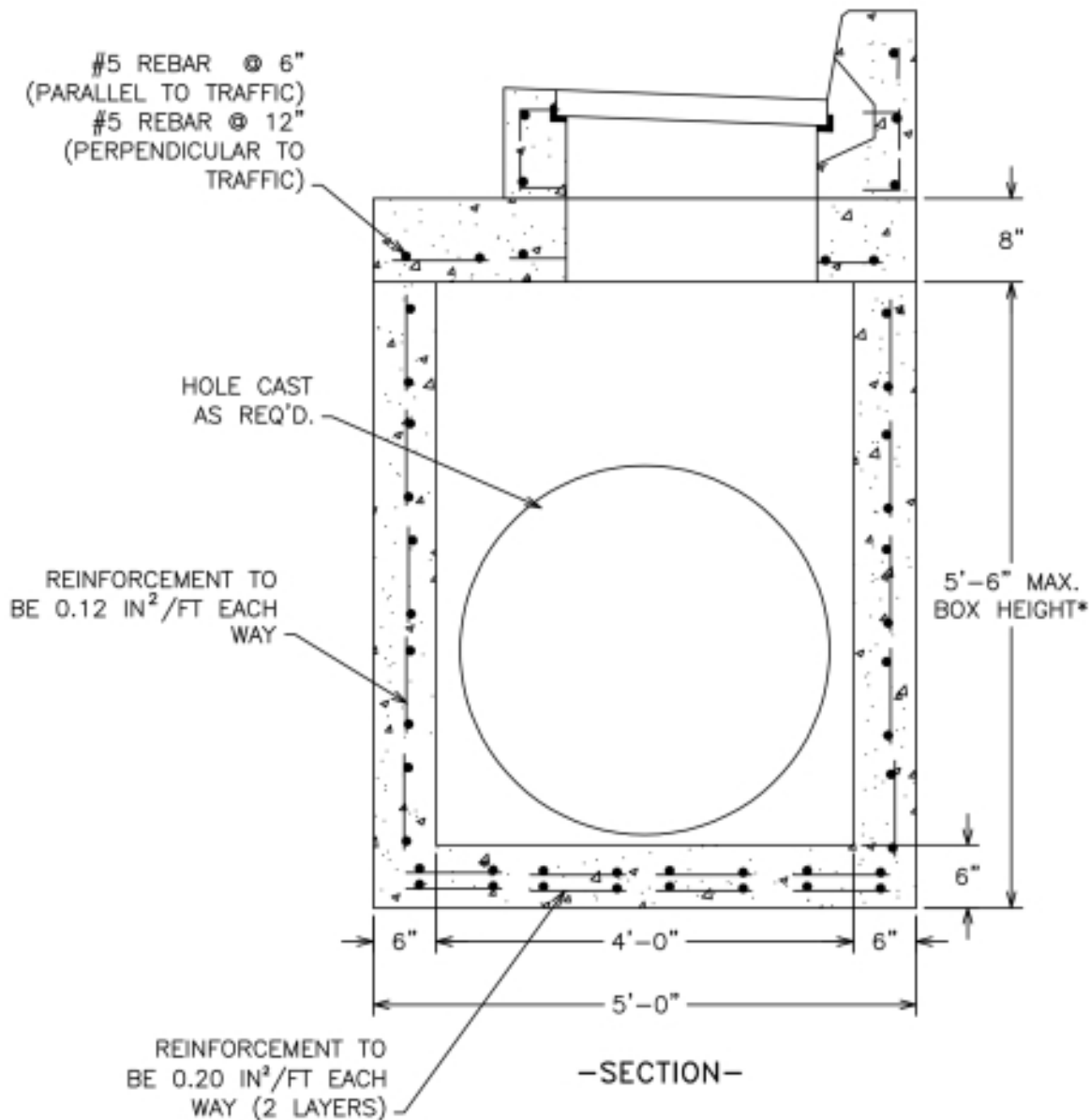


-PLAN-



PRECAST INLET BOX 2' X 6'

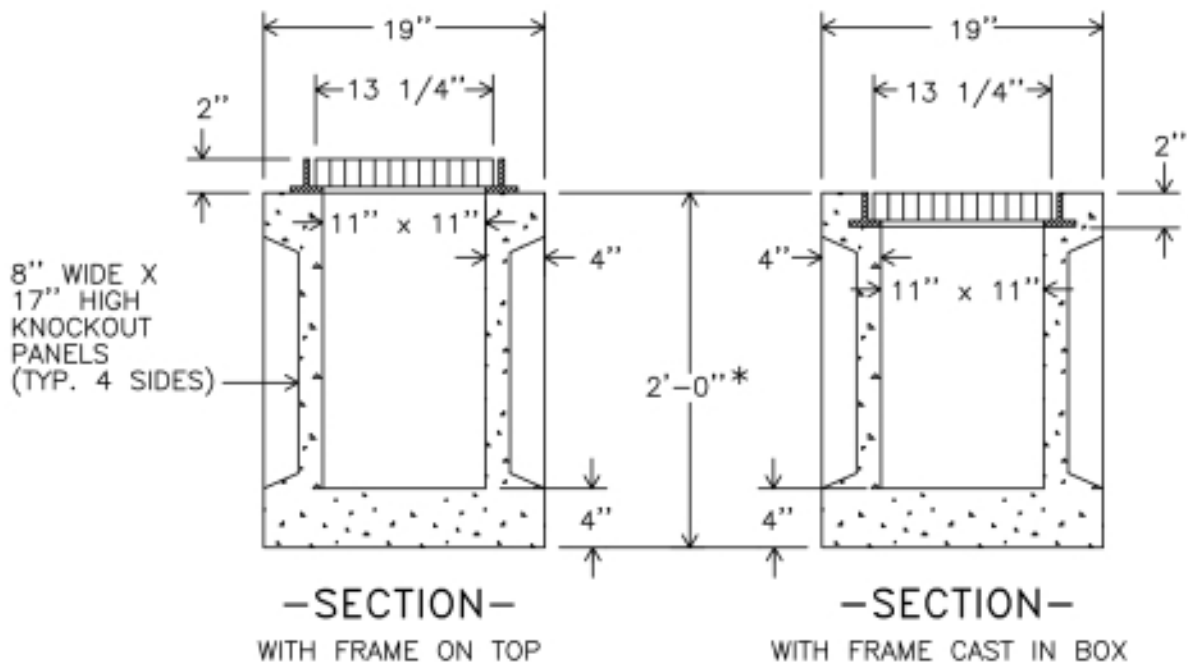
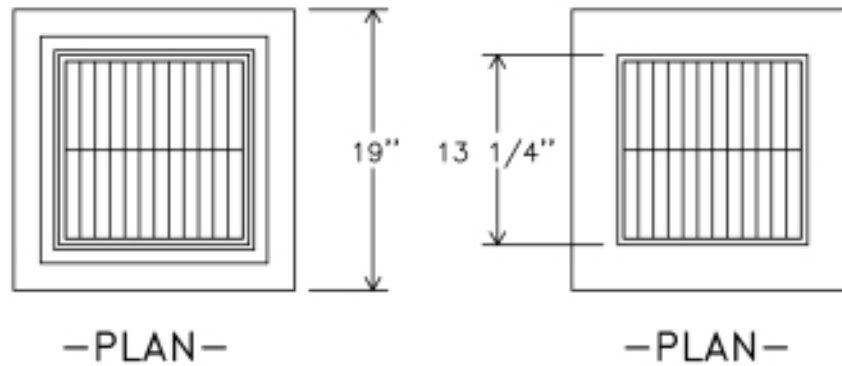
DWG. I-14



*RISER SECTIONS AVAILABLE

PRECAST INLET BOX 48" X 48"
FOR PENNDOT INLET TOPS

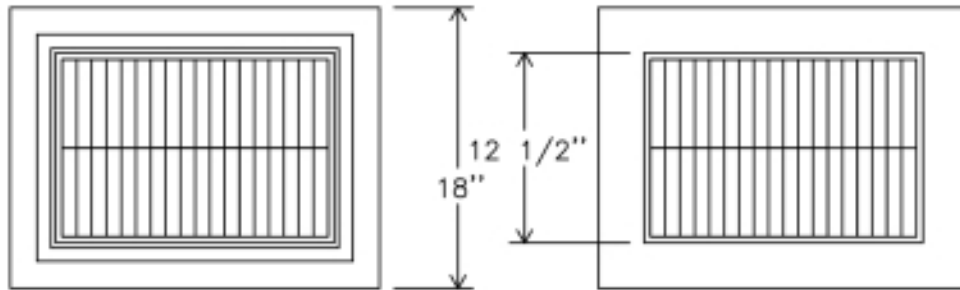
DWG. I-44C



*RISER SECTIONS AVAILABLE

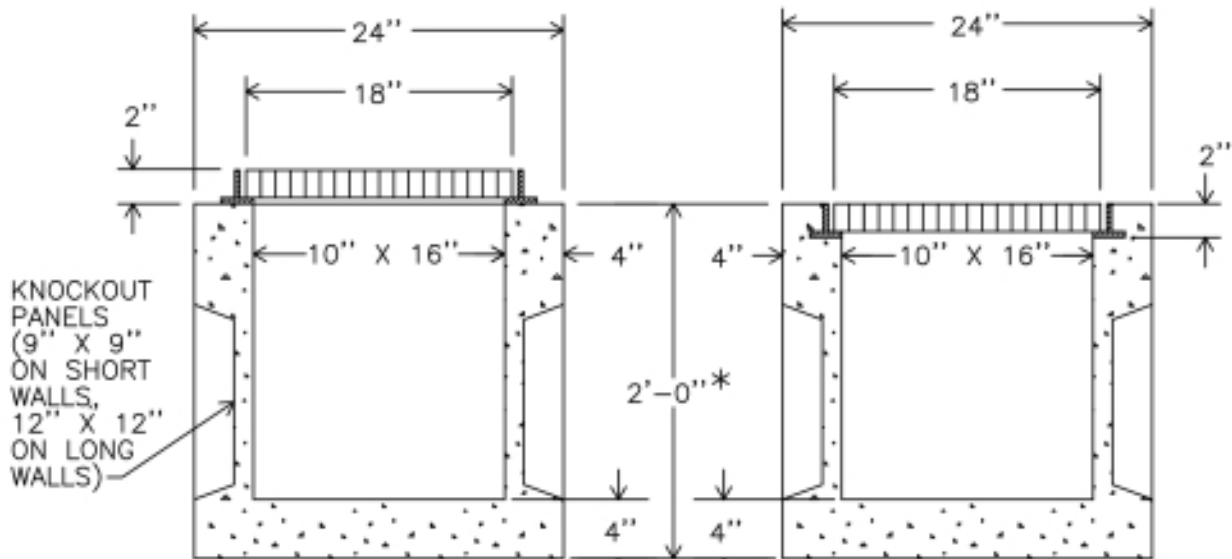
12'' X 12'' CATCH BASIN

DWG. CB-1



-PLAN-

-PLAN-



-SECTION-

WITH FRAME ON TOP

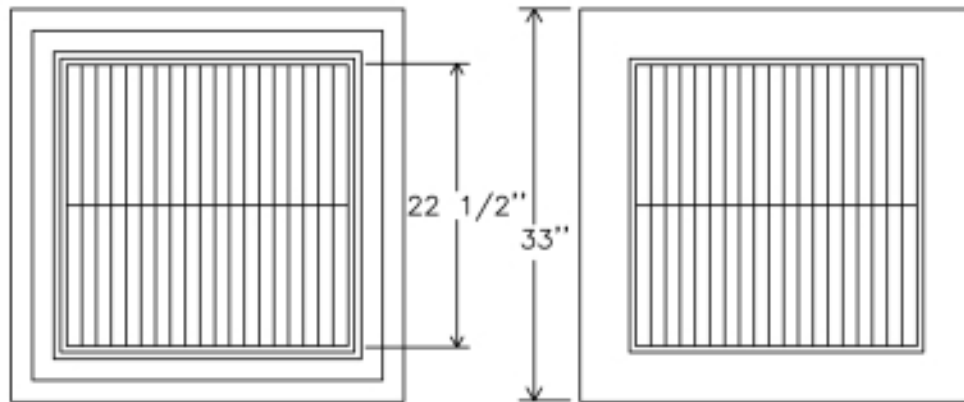
-SECTION-

WITH FRAME CAST IN BOX

*RISER SECTIONS AVAILABLE

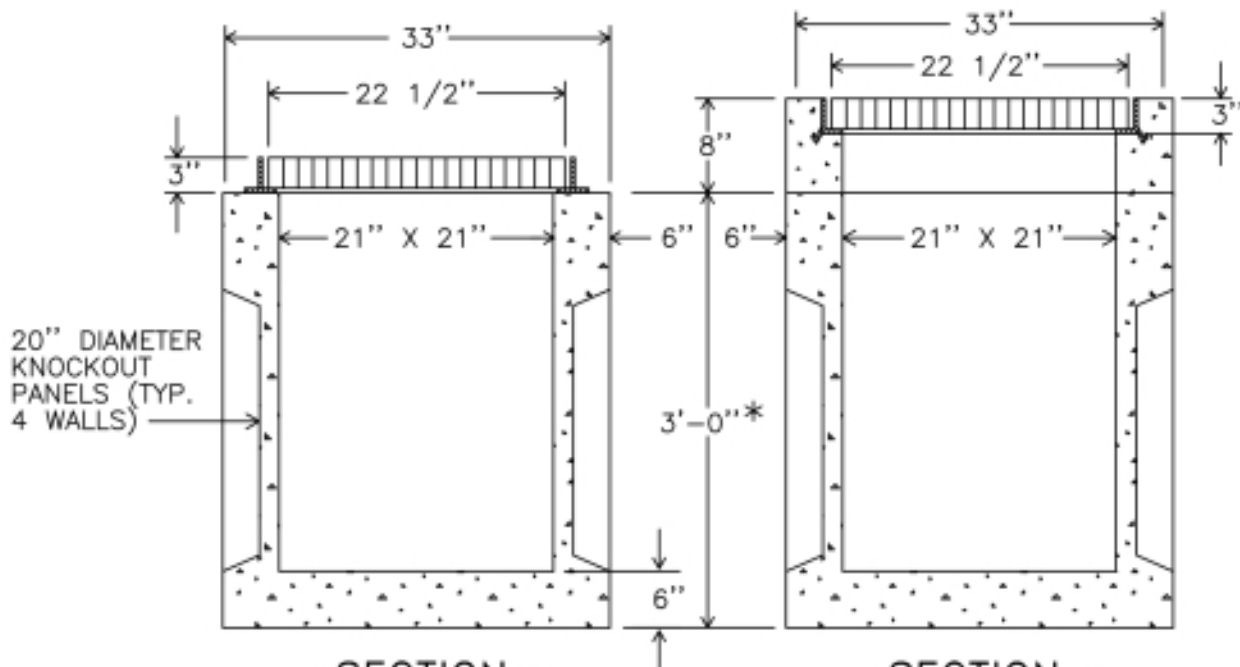
12'' X 18'' CATCH BASIN

DWG. CB-2



—PLAN—

—PLAN—



—SECTION—

WITH FRAME ON TOP

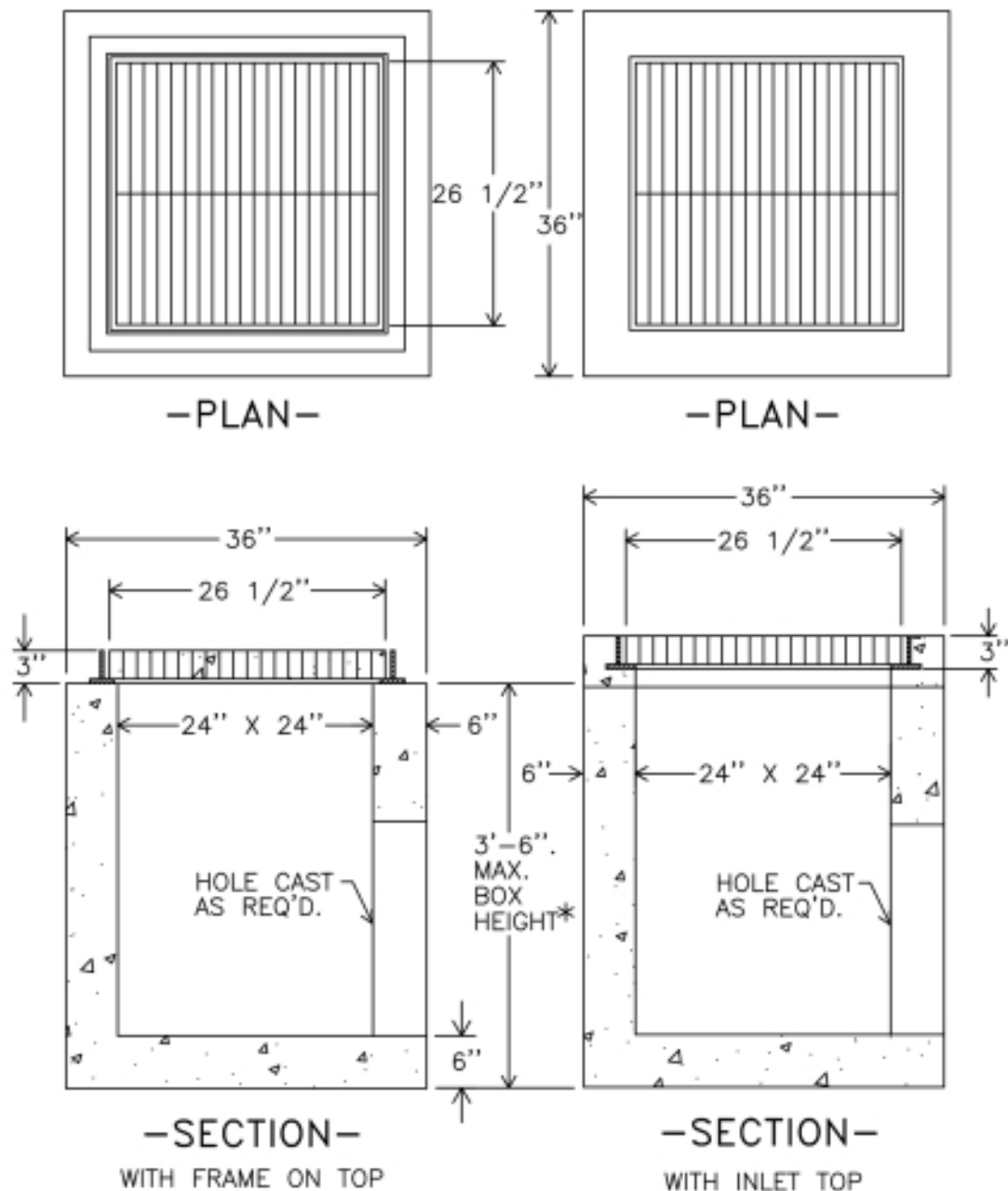
—SECTION—

WITH INLET TOP

*RISER SECTIONS AVAILABLE

21" X 21" CATCH BASIN

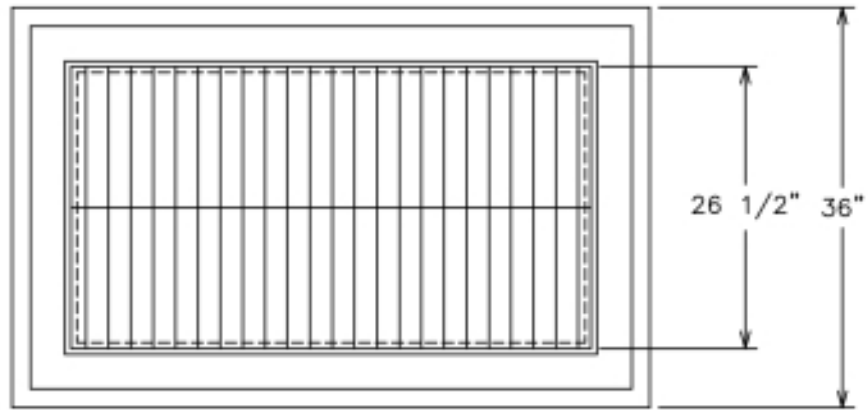
DWG. CB-6



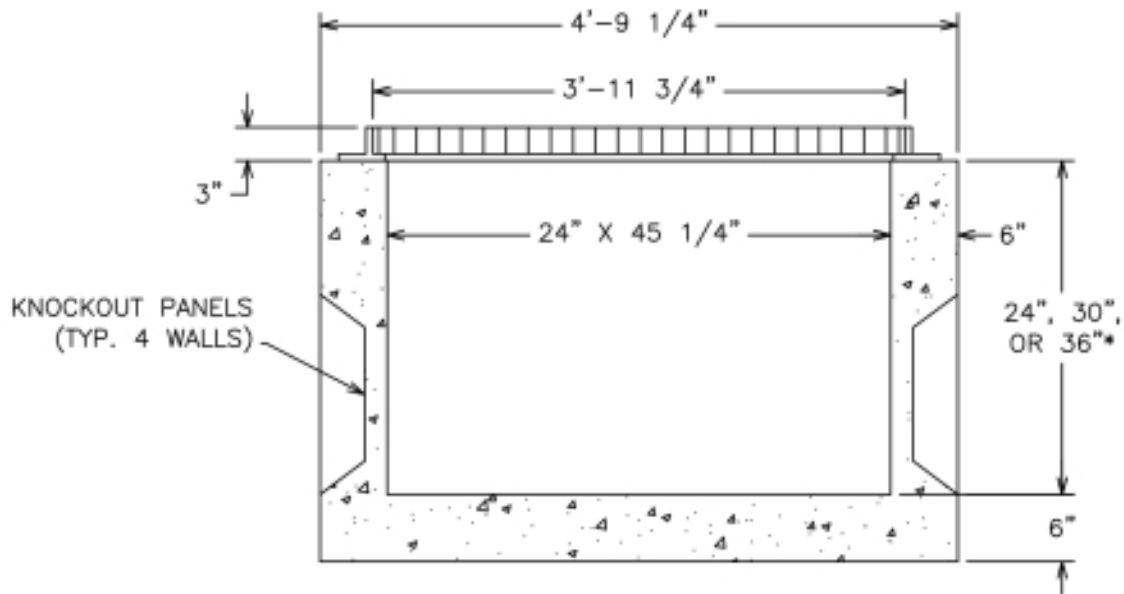
*RISER SECTIONS AVAILABLE

24" X 24" CATCH BASIN

DWG. CB-7



-PLAN-



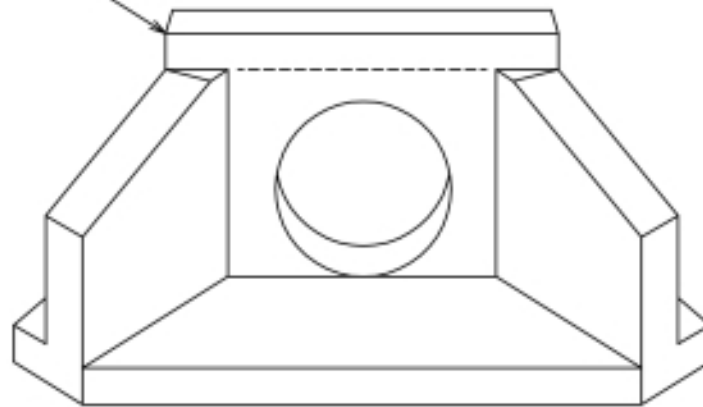
-SECTION-
WITH FRAME AND GRATE

*RISER SECTIONS AVAILABLE

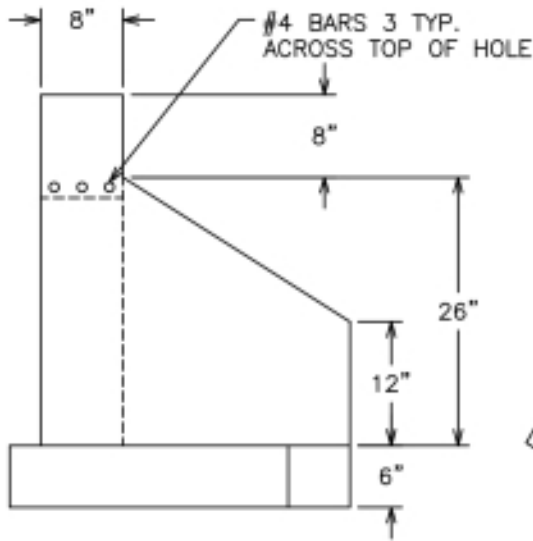
24" X 48" CATCH BASIN

DWG. CB-11

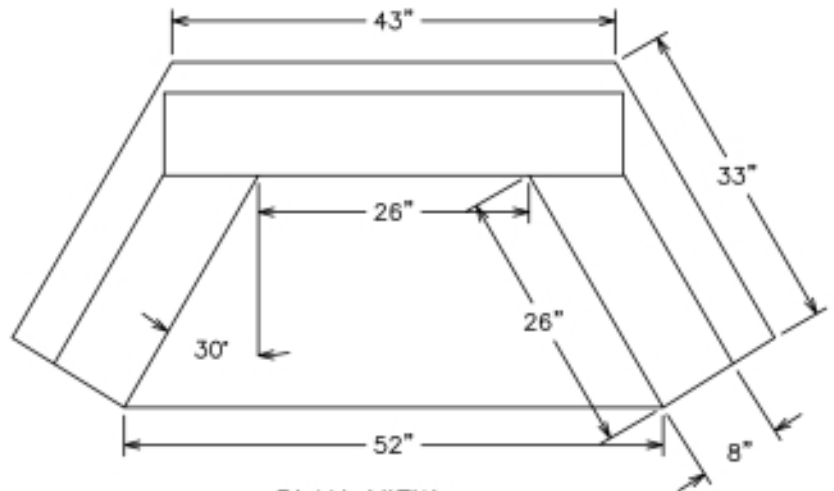
AVAILABLE WITHOUT
TOP RISER SECTION



-ISOMETRIC-



-SIDE VIEW-



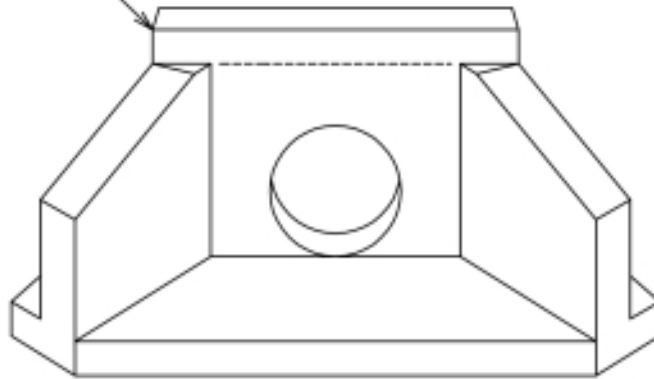
-PLAN VIEW-

NOTE: REINFORCEMENT TO BE 0.12 IN²/FT. EACH WAY

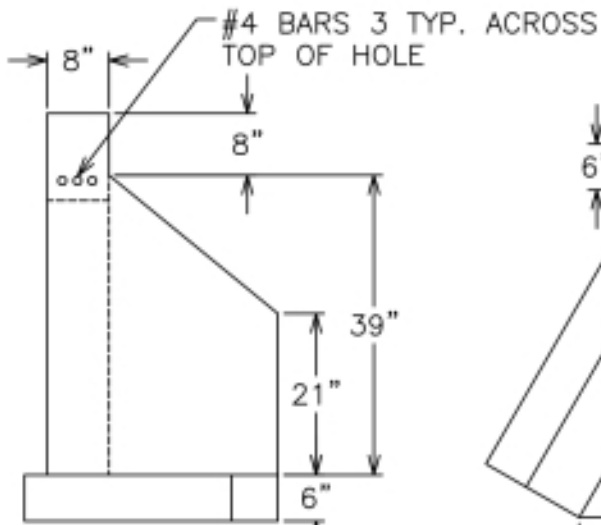
TYPE D-W ENDWALL
MAXIMUM PIPE SIZE - 21" C.M.P.

DWG. OS-1

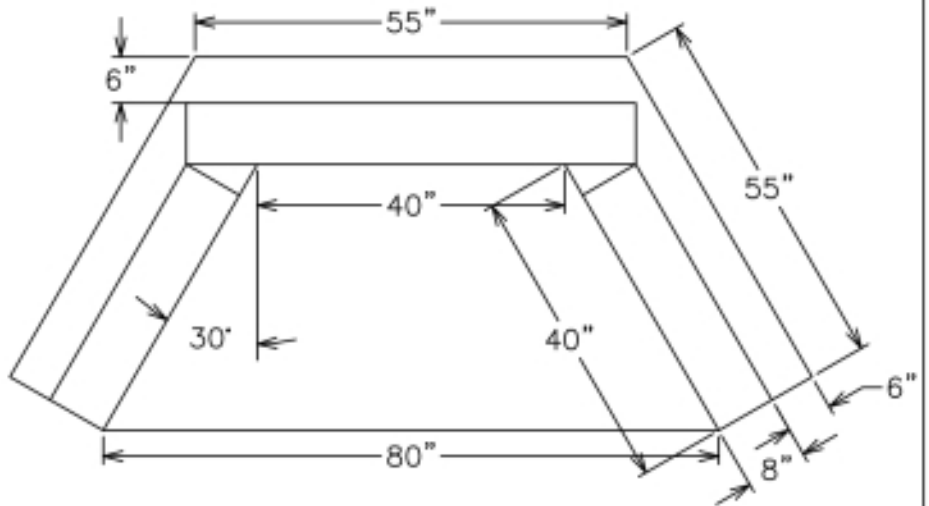
AVAILABLE WITHOUT
TOP RISER SECTION



—ISOMETRIC—



—SIDE VIEW—



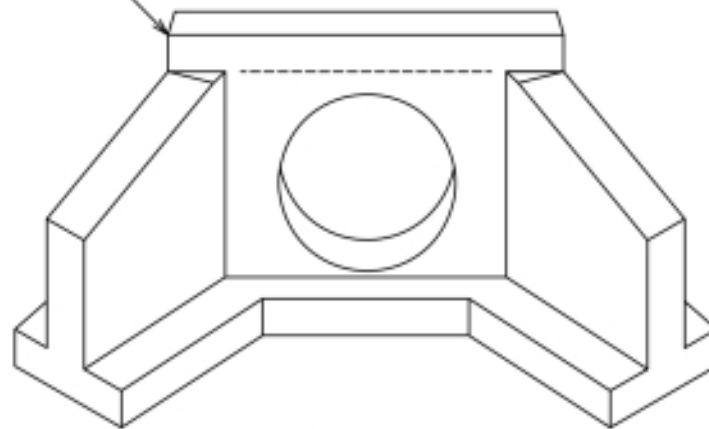
—PLAN VIEW—

NOTE: REINFORCEMENT TO BE 0.12 IN²/FT. EACH WAY

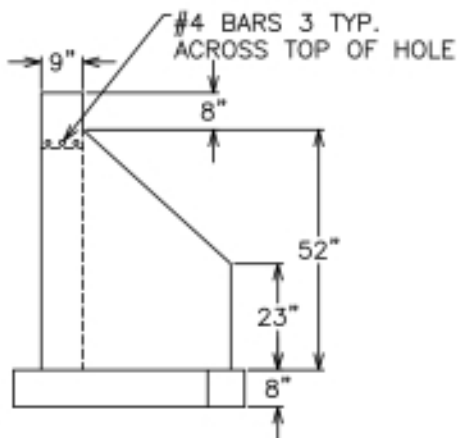
TYPE D-W ENDWALL
MAXIMUM PIPE SIZE — 36" C.M.P.

DWG. OS-2

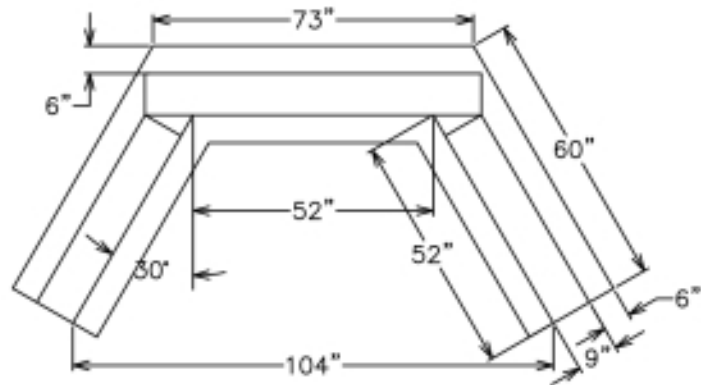
AVAILABLE WITHOUT
TOP RISER SECTION



-ISOMETRIC-



-SIDE VIEW-

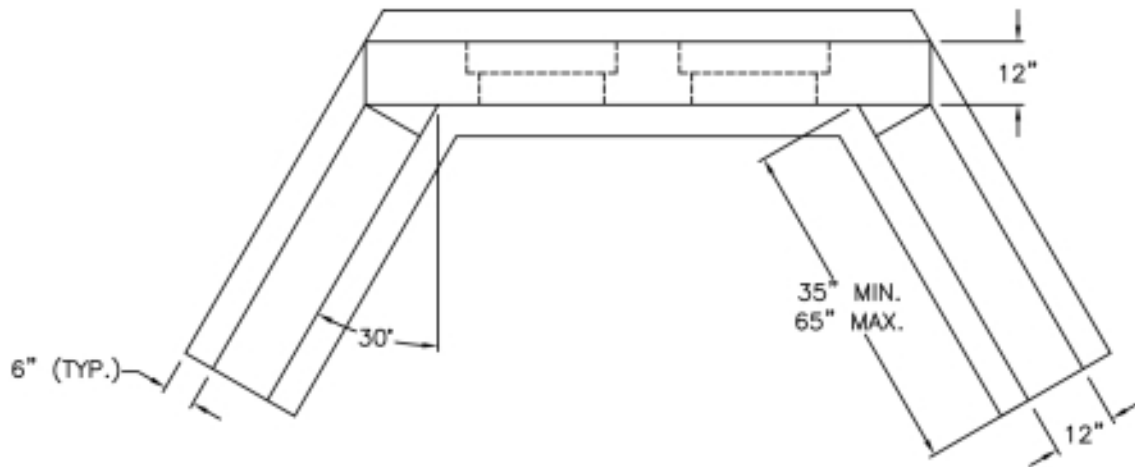


-PLAN VIEW-

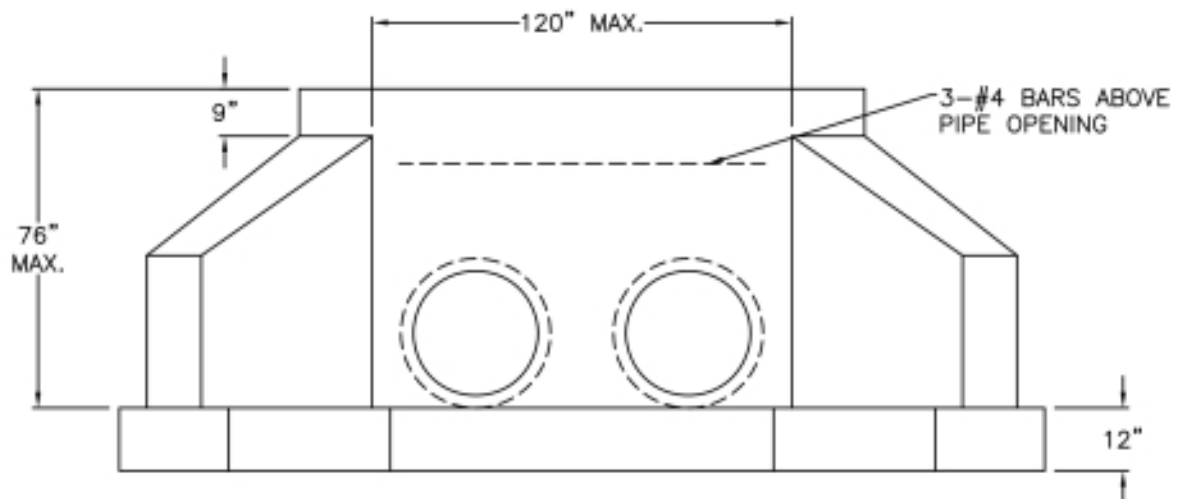
NOTE: REINFORCEMENT TO BE 0.12 IN²/FT. EACH WAY

TYPE D-W ENDWALL
MAXIMUM PIPE SIZE - 48" C.M.P.

DWG. OS-3



-PLAN VIEW-



-ELEVATION-

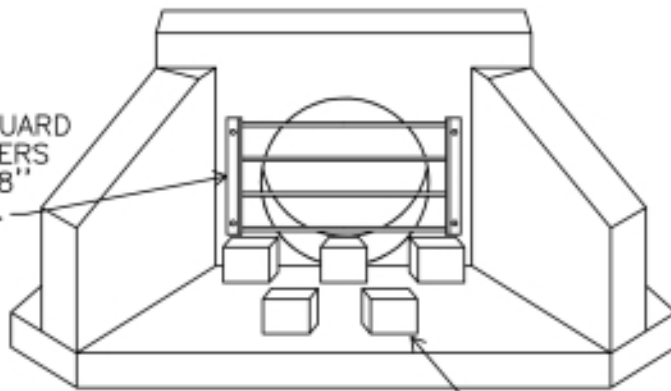
NOTES:

- ALL EXPOSED EDGES TO HAVE $\frac{3}{4}$ " CHAMFER
- MINIMUM 4000 P.S.I. CONCRETE
- REINFORCEMENT TO BE 0.12 IN²/FT. EACH WAY

TYPE DW ENDWALL
ADJUSTABLE SIZES

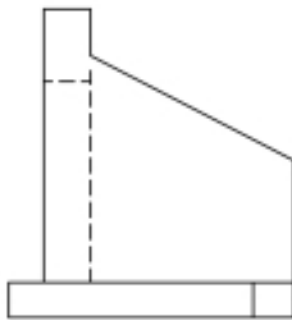
DWG. OS-4

1/2" DIA. GALV. GUARD
BARS ON 6" CENTERS
ATTACHED WITH 3/8"
DIA. S.S. ANCHORS.

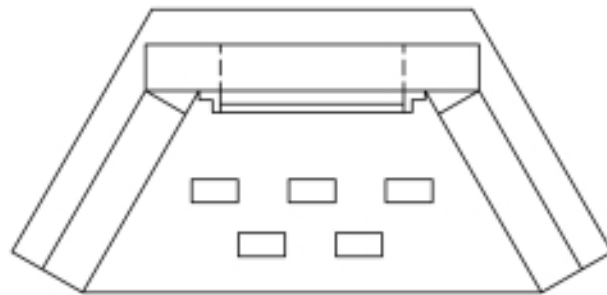


-ISOMETRIC-

4"X 8" CONCRETE
BLOCKS 6" HIGH



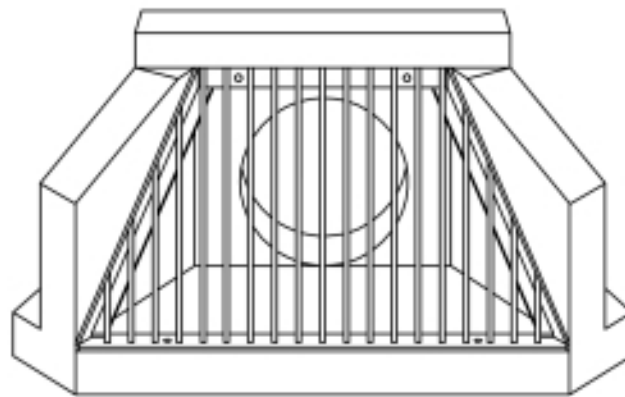
-SIDE VIEW-



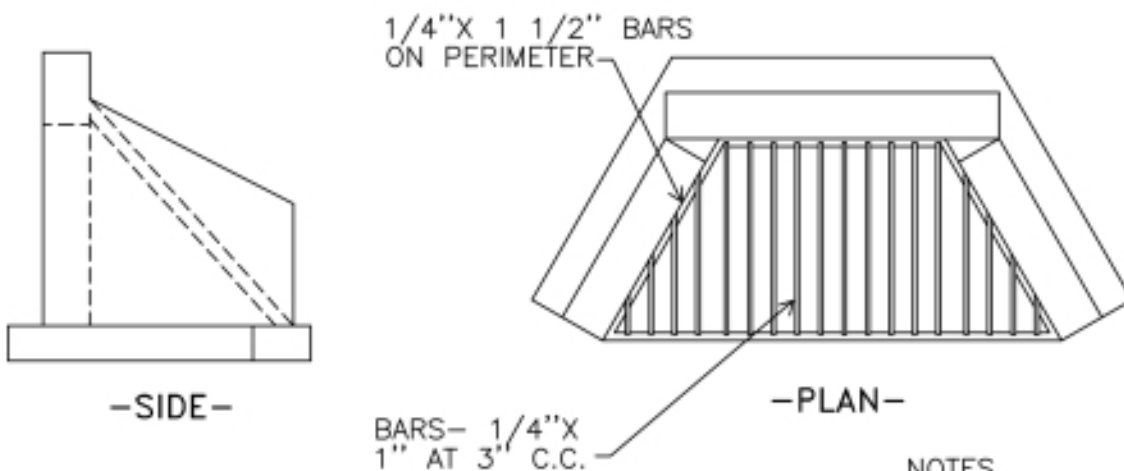
-PLAN VIEW-

TYPE D-W ENDWALL
W/ BLOCKS AND TRASH RACK

DWG. OS-8



-ISOMETRIC-

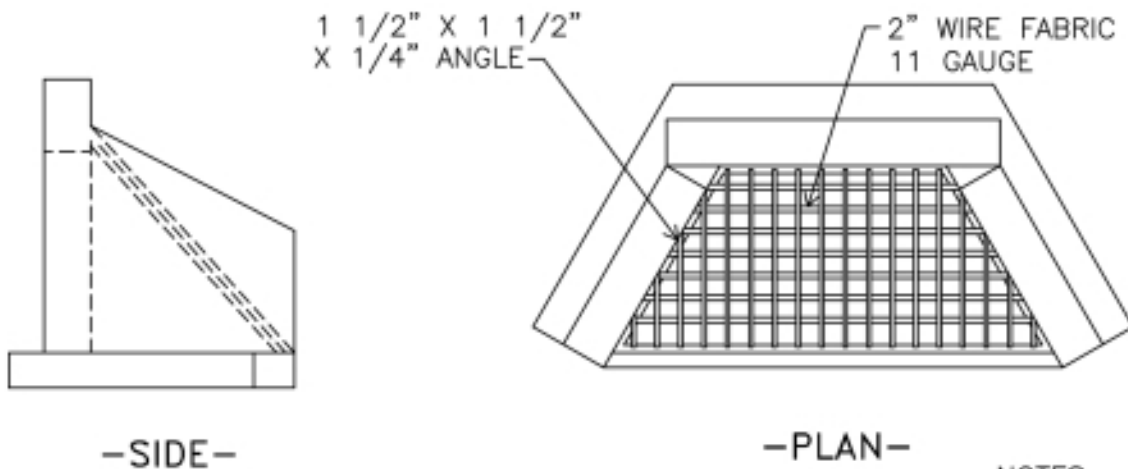
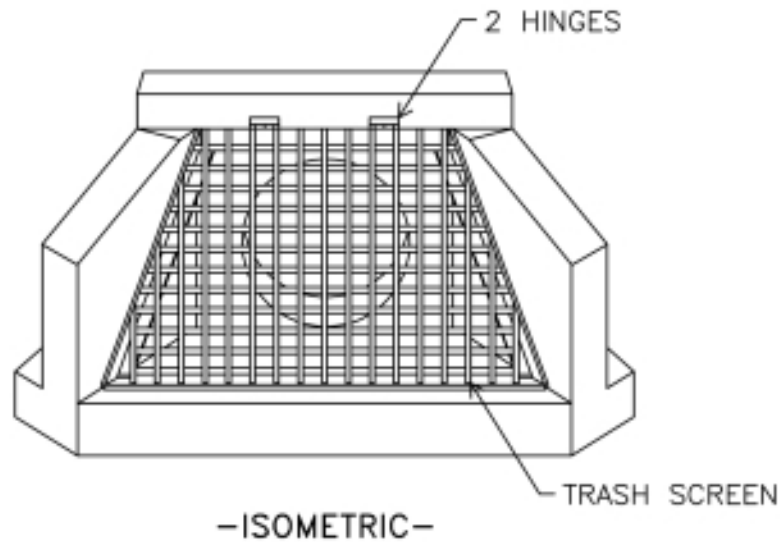


NOTES

- 1). MATERIAL TO BE HOT DIPPED GALVANIZED STEEL
- 2). ATTACH TRASH RACK TO HEADWALL WITH 3/8" DIA. S.S. ANCHOR BOLTS.
- 3). HINGED VERSION AVAILABLE.

TYPE D-W ENDWALL
W/ TRASH RACK

DWG. OS-9



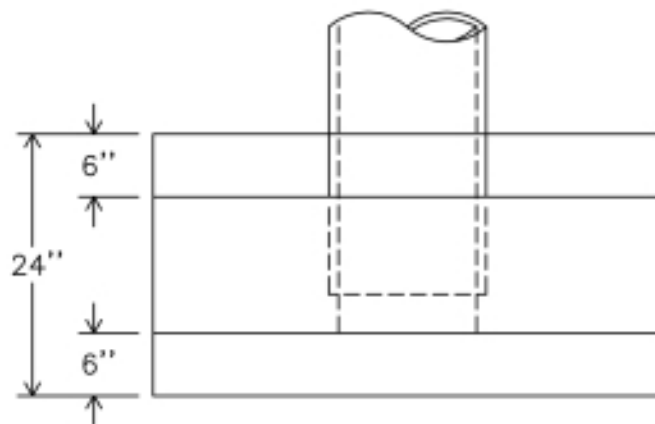
NOTES

- 1.) TRASH SCREEN TO BE HOT DIPPED GALVANIZED AFTER FABRICATION.
- 2.) ATTACH HINGES TO HEADWALL WITH 3/8" DIA. S.S. ANCHOR BOLTS.
- 3.) NON-HINGED VERSION AVAILABLE.

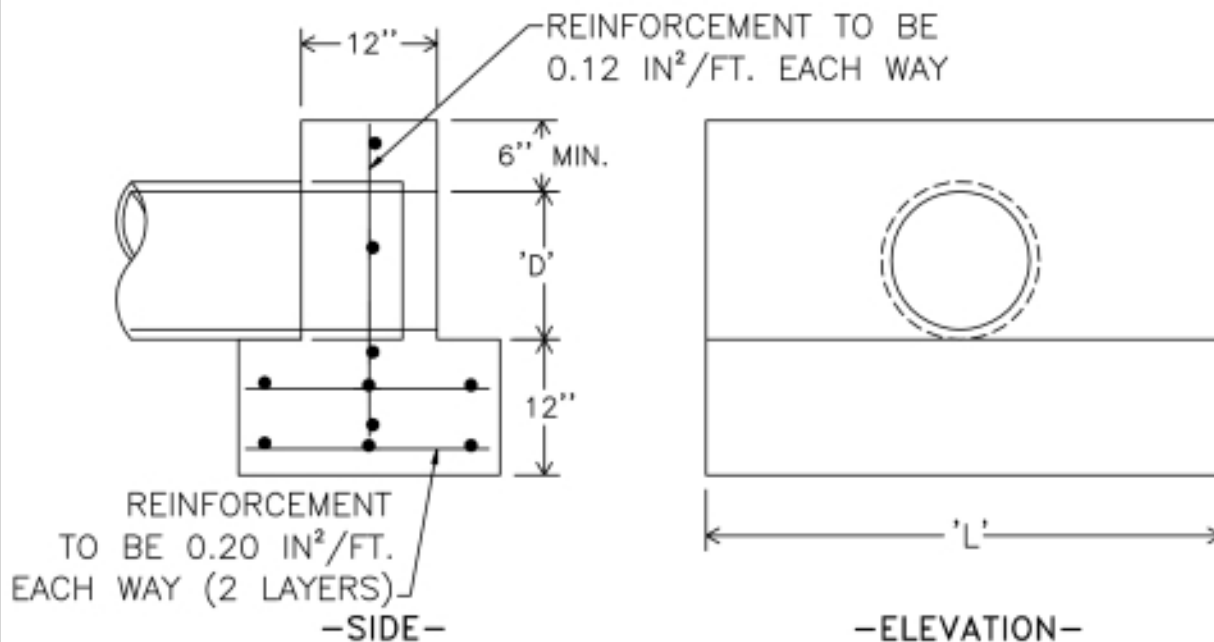
TYPE D-W ENDWALL
W/ TRASH SCREEN

DWG. OS-10

PIPE DIA.	L
21" & LESS	5'-0"
24" & 27"	7'-0"
30" & 33"	9'-0"



-PLAN-

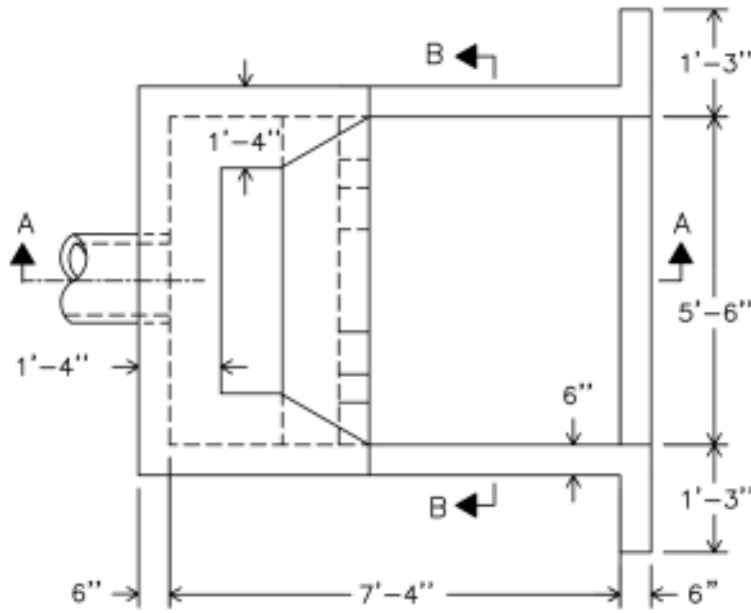


*MEETS PENN DOT RC-31 SPECIFICATION
*CUSTOM SIZES AVAILABLE

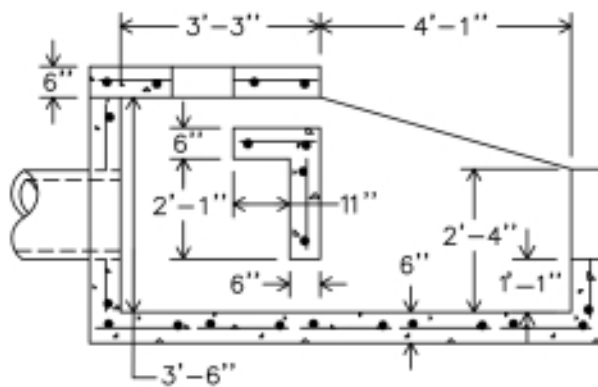
TYPE D PRECAST ENDWALL

DWG. OS-15

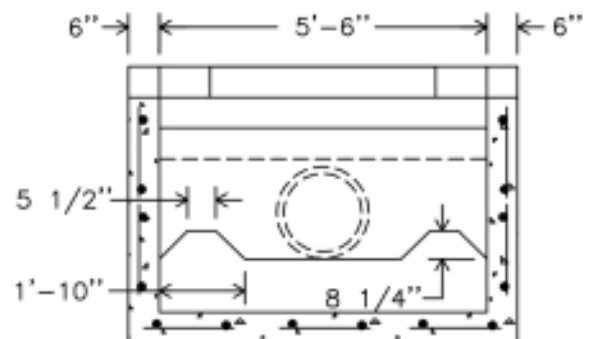
MAXIMUM RECOMMENDED
PIPE SIZE - 18" DIAMETER



-PLAN-



-SECTION AA-



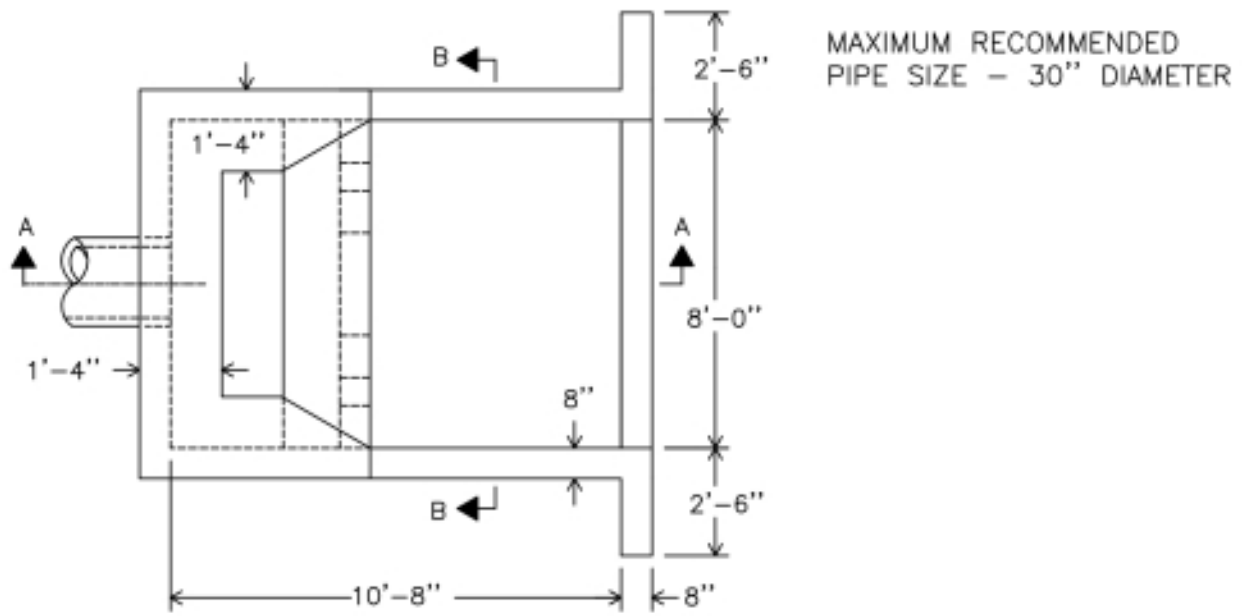
-SECTION BB-

NOTES:

1. CONCRETE IS 6,000 PSI @ 28 DAYS
2. REINFORCING #4 BARS @ 12" E.W. TYP. ALL WALLS

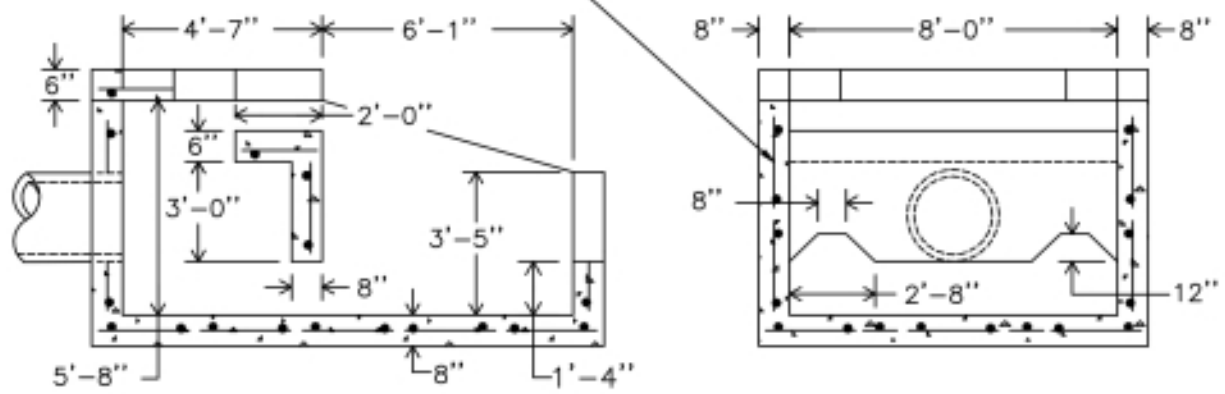
PRECAST STILLING BASIN

DWG. OS-16



-PLAN-

REINFORCING TO BE
#5 BARS @ 12" C.C.E.W.

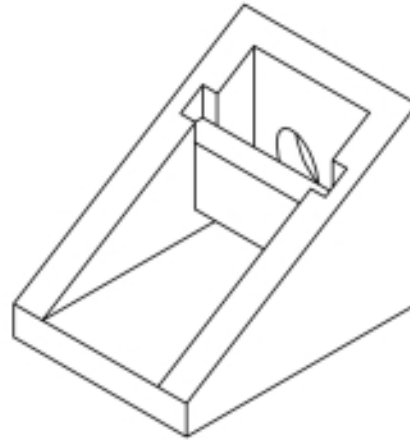


-SECTION AA-

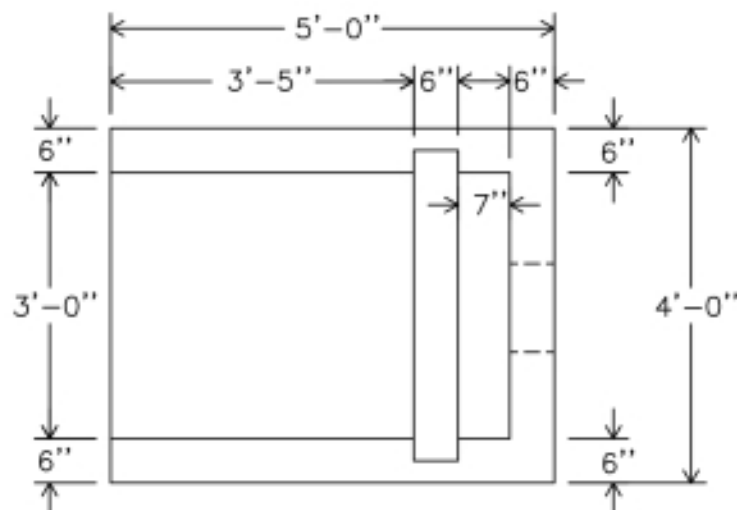
-SECTION BB-

PRECAST STILLING BASIN

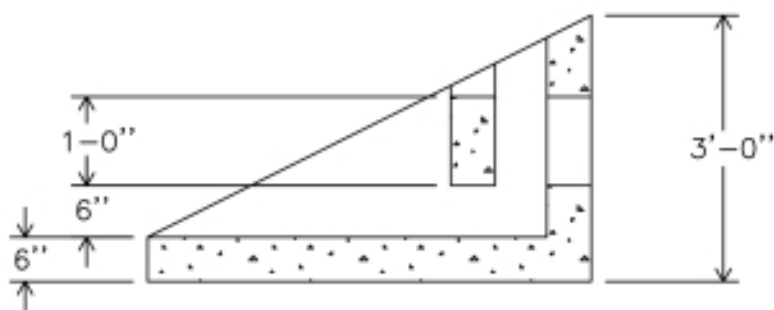
DWG. OS-17



- MAX. PIPE SIZE 15"
- LARGER CUSTOM SIZES AVAILABLE



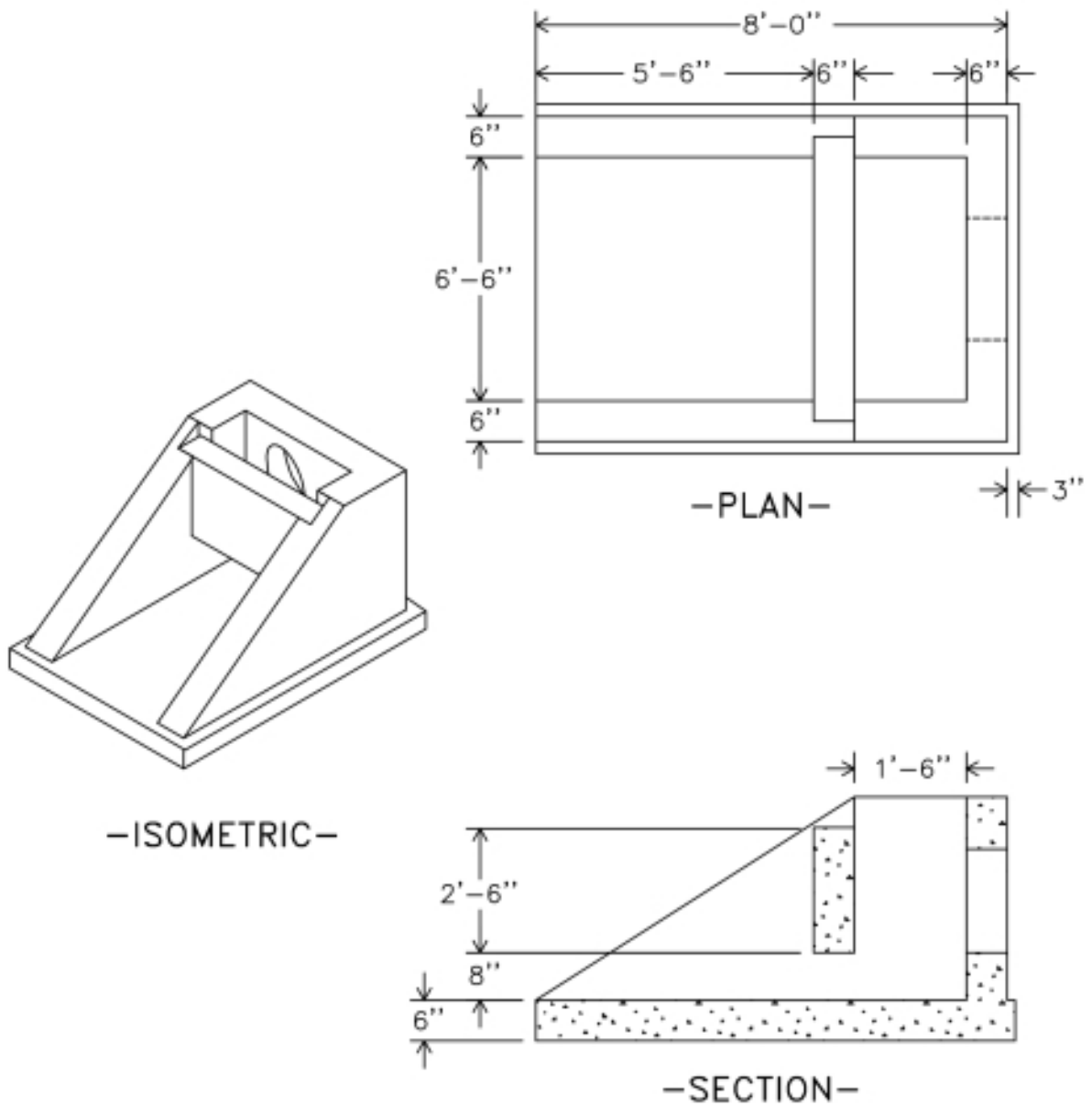
—PLAN—



—SECTION—

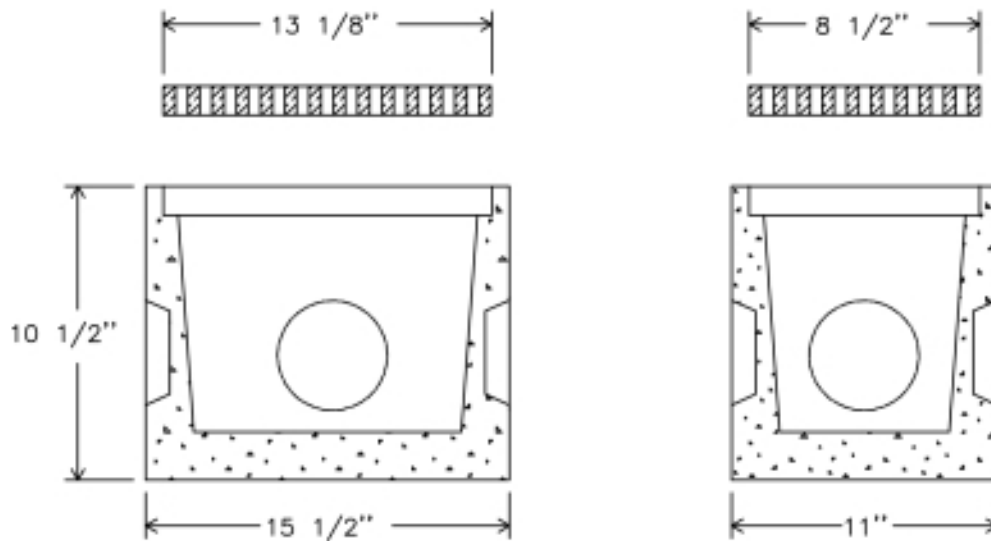
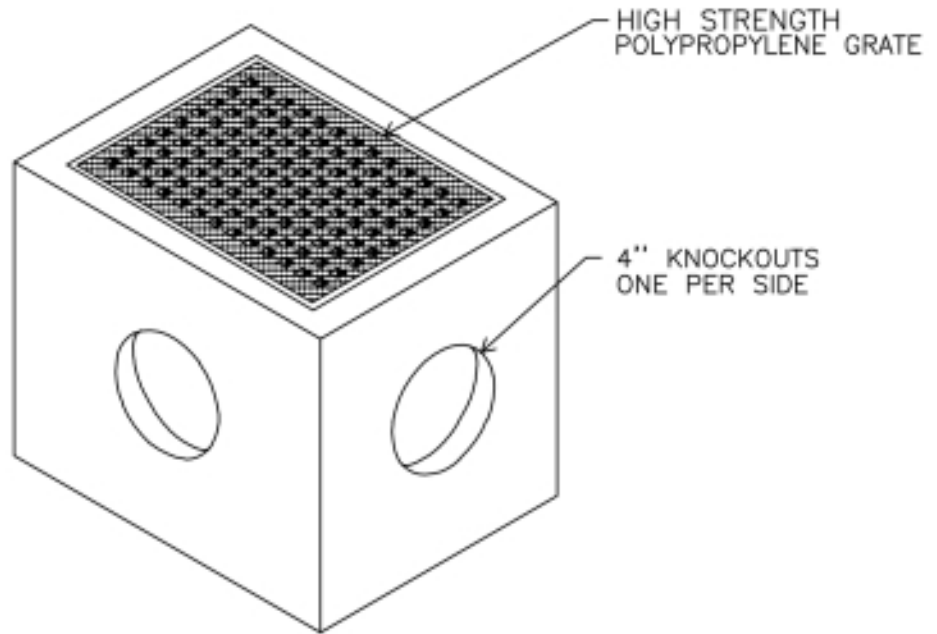
ENERGY DISSIPATOR

DWG. OS-19



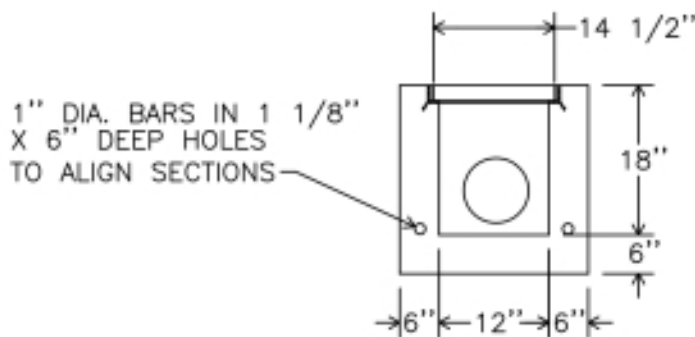
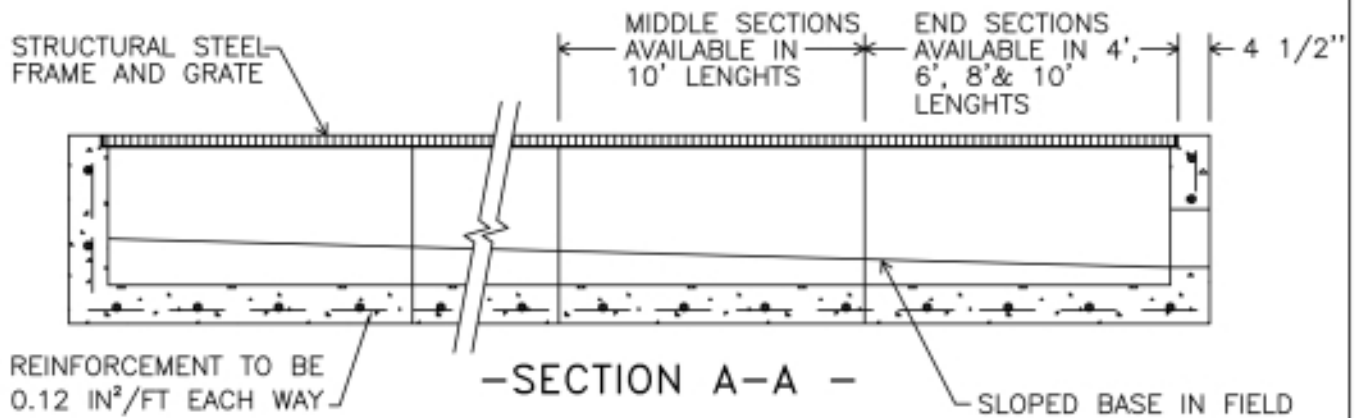
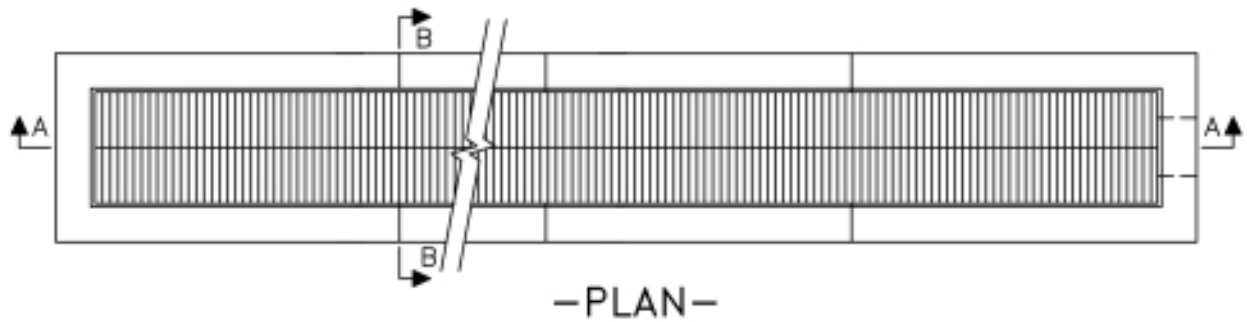
ENERGY DISSIPATOR -
27" & 30" PIPES

DWG. OS-20



PRECAST CONCRETE RAIN DRAIN

DWG. RD-1



NOTE: STRUCTURE IS RATED FOR H-20 TRAFFIC LOADING.

PRECAST CONCRETE TRENCH DRAINS
WITH 14 1/2" WIDE GRATING

DWG. TD-3