



Preventative Care Setup

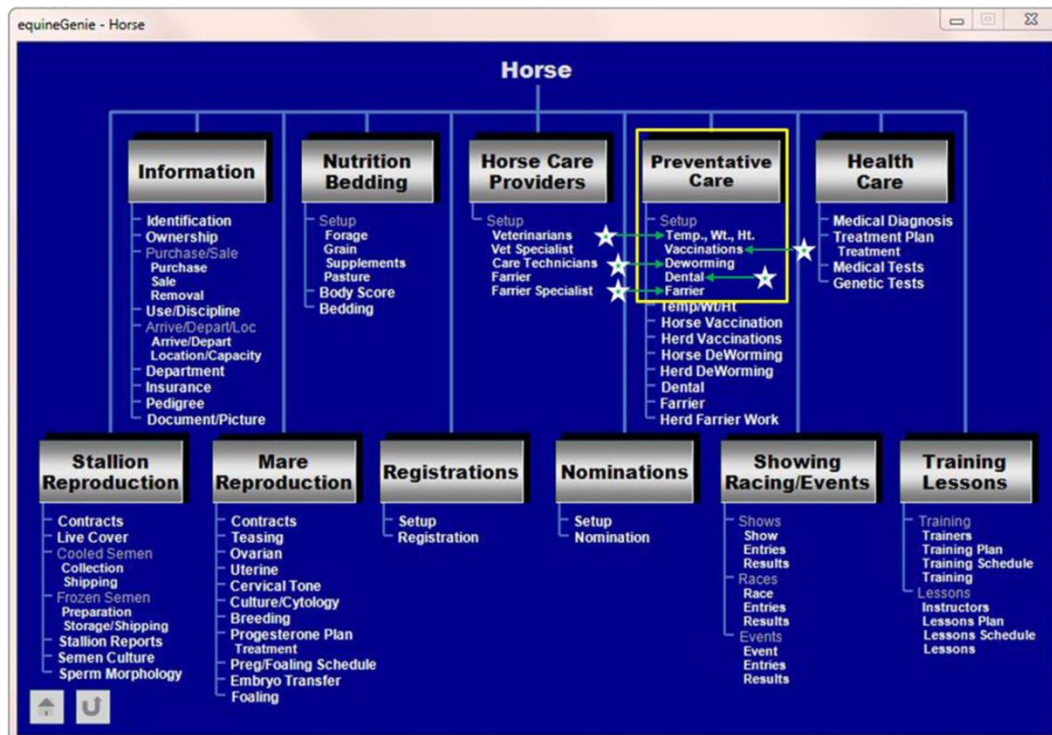
Temperature, Weight and Height
Vaccinations
Deworming
Dental
Farrier

Preventative Care Setup

Table of Contents

Preventative Care Introduction.....	3
Preventative Care Setup – Temperature, Weight, Height.....	4
Temperature Setup.....	4
Weight Setup.....	6
Height Setup	8
Preventative Care Setup – Vaccinations.....	11
Vaccination Scheduling Flow	13
Preventative Care Setup – Deworming.....	16
Dewormer Rotation Protocol Setup / Every 4 Months	17
Deworming Scheduling Flow.....	18
Preventative Care Setup – Dental.....	20
Preventative Care Setup – Farrier.....	23

Mouse Over and Click on a content subject to go to that subject



Preventative Care Introduction

Preventative care management is essential to your horses' health and the control of disease on your farm or ranch. There are other environmental and management factors and influences that go hand in hand with a good preventative care program. All preventative care is important, but two are easily accomplished. They are a clean well maintained environment where your horses are stabled and pastured, and a good relationship with your veterinarian when identifying the preventative care program for each horse.

equineGenie enables you and your veterinarian to define and enter the necessary preventative care. The preventative care entered in equineGenie will generate a reminder for each preventative care when it is due. The better you define your preventative care the easier it is to record what was done and its cost when a reminder is executed. In most cases the information entered when a preventative care is setup is transferred to the preventative care screen when a reminder is executed.

A well-defined preventative care program will not only assist in the management and maintenance of your horse's daily health, but also their conditioning, appearance, weight and hoof care. The horses' appearance under your management is important in marketing and branding your horse business and attracting customers.

[Return to the Table of Content](#)

Preventative Care Setup – Temperature, Weight, Height

*The Horse Preventative Care – Temperature, Weight and Height Setup screen is used to setup and schedule taking a horse's temperature, measuring its weight and height. An individual plan and schedule can be created for each horse active in the system. **It is a one-time setup unless the user needs to change a previous setup.** Think/Plan before you setup the business's horse temperature, weight and height! equineGenie allows for different time periods for taking a horse's temperature and measuring its weight and height.*

Path: Home: Horse: Preventative Care: Setup: Temp., Wt., Ht.

There is a prerequisite setup required before a horse's Temperature, Weight and Height preventative care can be setup. A horse must be entered in equineGenie, Path – Home: Horses: Information: Identification. The business measurement system preference must have been identified before administering any preventative care, Path – Home: Preferences.

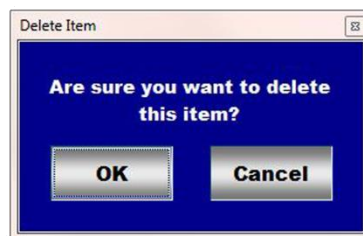
Temperature Setup

- ① Select the horse whose temperature is being setup from the Select Horse dropdown.
- ② Select how often you want to take the selected horse's temperature from the Frequency dropdown.

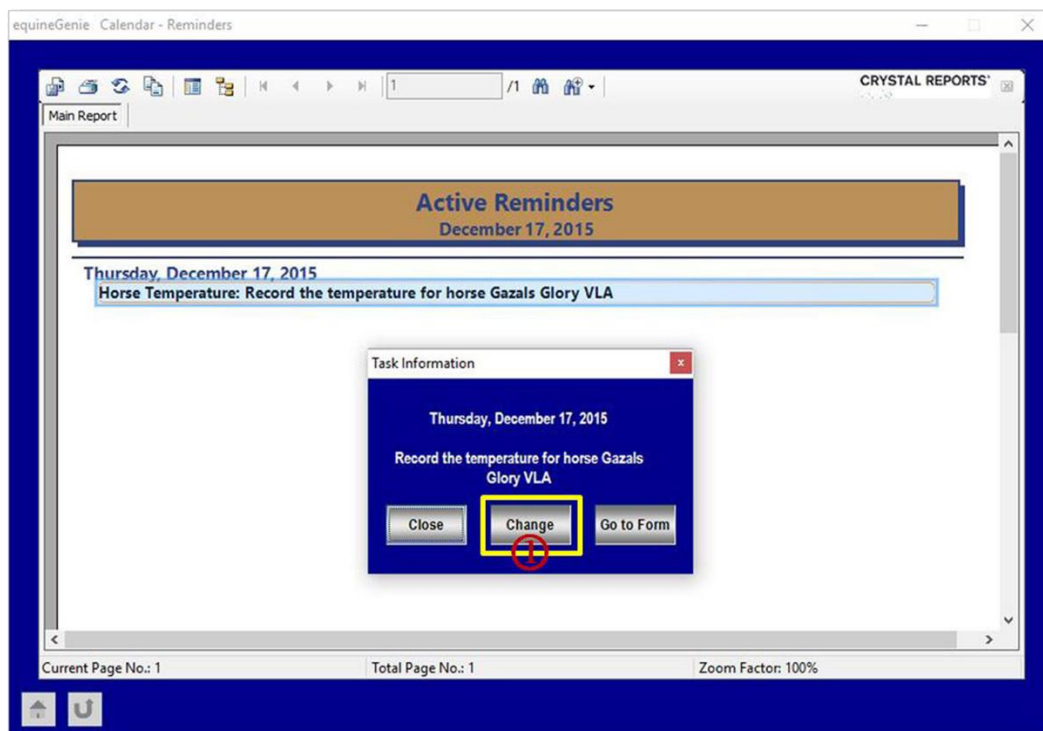
- ③ **Enter** the previous date the selected horse's temperature was taken by selecting the date from the calendar icons or entering the date format set in your windows operating system. (mm/dd/yyyy or dd/mm/yyyy).

Note (1): equineGenie uses the frequency ② and the previous date ③ to set an automatic reminder trigger for the next time the selected horse's temperature needs to be taken.

- ④ **If you need to delete a temperature reminder**, it can be deleted by displaying the temperature setup and selecting the **Red Delete Temp Reminder** button. When the button is selected a **Delete Item** popup will be displayed to make sure you want to delete the reminder.



Note (2): After selecting **OK** on the **Delete Item** popup you need to select the **Enter** button. You can initiate deleting a temperature reminder from the **Temperature, Weight, Height Setup** screen or by selecting **Change** ① on the Active Reminder screen.



- ⑤ **Enter** any comments or notes associated with the selected horse's temperature setup.
- ⑥ **Select Enter** before leaving the Temperature, Weight, Height Setup screen.
- ⑦ **Selecting the Horse Temp, Wt, Ht. Schedule** button will display the selected horse's temperature, weight and height schedule.
- ⑧ If there is no weight or height setup required, selecting the **Go To Vaccination Setup** will display the Vaccination Setup screen.
- ⑨ **Selecting the Height and Reports Next Page** right arrow will display the Height setup screen.

[Return to the Table of Content](#)

Weight Setup

- ① **Select** the horse whose weight is being setup from the Select Horse dropdown.
- ② **Select** how often you want to measure the selected horse's weight from the Frequency dropdown.

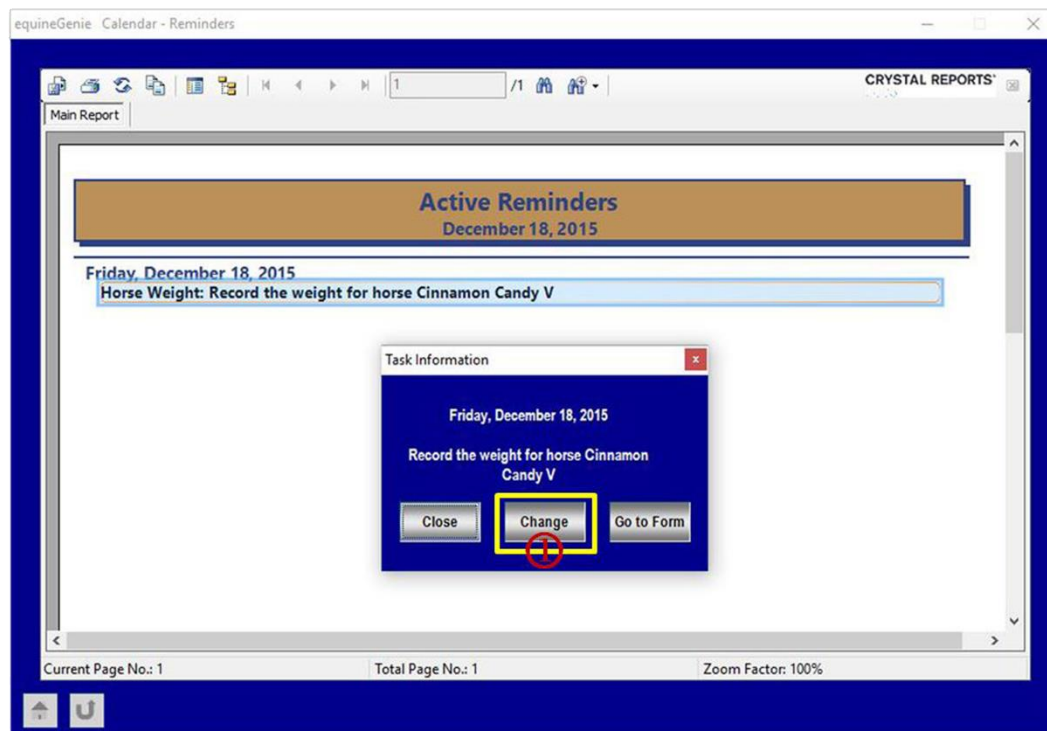
- ③ **Enter** the previous date the selected horse's weight was measured by selecting the date from the calendar icons or entering the date format set in your windows operating system. (mm/dd/yyyy or dd/mm/yyyy).

Note (1): equineGenie uses the frequency ② and the previous date ③ to set an automatic reminder trigger for the next time the selected horse's weight needs to be measured.

- ④ **If you need to delete a weight reminder**, it can be deleted by displaying the weight setup and selecting the **Red Delete Weight Reminder** button. When the button is selected a **Delete Item** popup will be displayed to make sure you want to delete the reminder.



Note (2): After selecting **OK** on the **Delete Item** popup you need to select the **Enter** button. You can initiate deleting a weight reminder from the **Temperature, Weight, Height Setup** screen or by selecting **Change** ① on the Active Reminder screen.



- ⑤ **Enter** any comments or notes associated with the selected horse's weight setup.

- ⑥ Select Enter before leaving the Temperature, Weight, Height Setup screen.
- ⑦ Selecting the **Horse Temp, Wt, Ht. Schedule** button will display the selected horse's temperature, weight and height schedule.
- ⑧ If there is no temperature or height setup required, selecting the **Go To Vaccination Setup** will display the Vaccination Setup screen.
- ⑨ Selecting the **Height and Reports Next Page** right arrow will display the Height setup screen.

[Return to the Table of Content](#)

Height Setup

- ① Select the horse whose height is being setup from the Select Horse dropdown.
- ② Select how often you want to measure the selected horse's height from the Frequency dropdown.

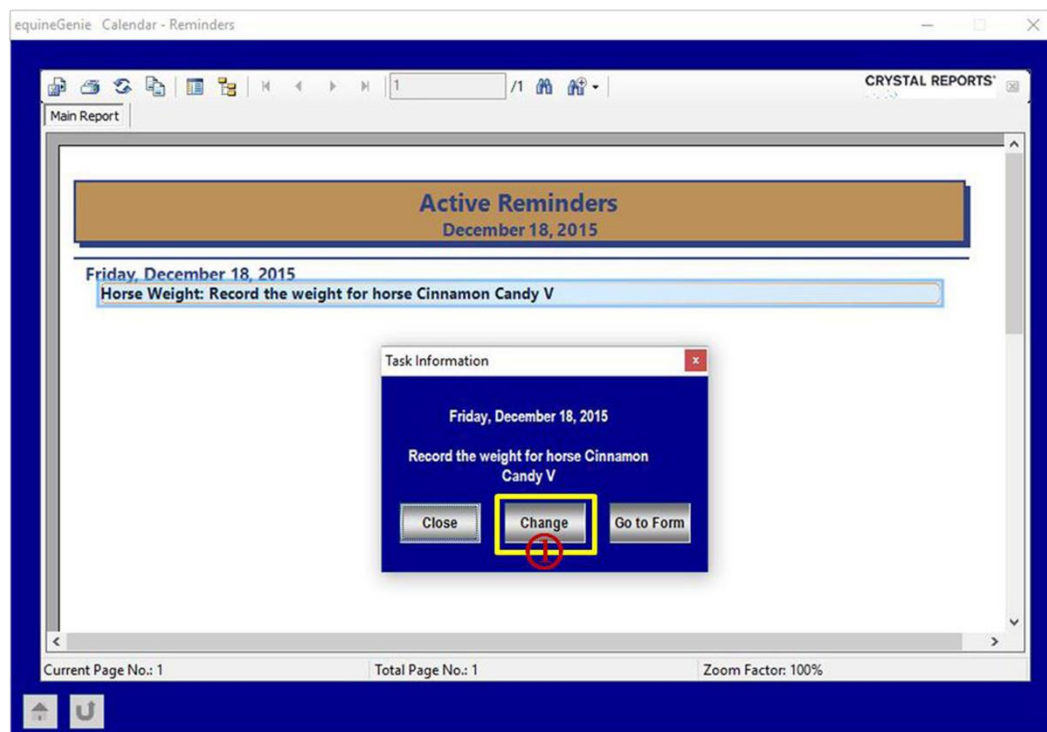
- ③ **Enter** the previous date the selected horse's height was measured by selecting the date from the calendar icons or entering the date format set in your windows operating system. (mm/dd/yyyy or dd/mm/yyyy).

Note (1): equineGenie uses the frequency ② and the previous date ③ to set an automatic reminder trigger for the next time the selected horse's height needs to be measured.

- ④ **If you need to delete a height reminder**, it can be deleted by displaying the height setup and selecting the **Red Delete Height Reminder** button. When the button is selected a **Delete Item** popup will be displayed to make sure you want to delete the reminder.



Note (2): After selecting **OK** on the **Delete Item** popup you need to select the **Enter** button. You can initiate deleting a height reminder from the **Temperature, Weight, Height Setup** screen or by selecting **Change** ① on the Active Reminder screen.



- ⑤ **Enter** any comments or notes associated with the selected horse's height setup.

- ⑥ **Select Enter before leaving the Temperature, Weight, Height Setup screen.**
- ⑦ **Selecting the Horse Temp, Wt, Ht. Schedule** button will display the selected horse's temperature, weight and height schedule
- ⑧ **Selecting the All Horse Temp, Wt, Ht. Schedule** button will display the temperature, weight and height schedule for all the horses that have been setup.
- ⑨ **Selecting the Previous Page** left arrow will display the Temperature and Weight setup screen.
- ⑩ If there is no temperature, weight or Height setup required, selecting the **Go To Vaccination Setup** will display the Vaccination Setup screen.

[Return to the Table of Content](#)

Preventative Care Setup – Vaccinations

The Horse Preventative Care – Vaccination Setup screen is used to setup and schedule administering a horse's vaccinations. An individual plan and schedule can be created for each horse active in the system. **It is a one-time setup unless the user needs to change a previous setup.** Think/Plan before you setup the business's horse vaccination vaccine protocol! equineGenie allows for different vaccination schedules.

Path: Home: Horse: Preventative Care: Setup: Vaccinations.

There is a prerequisite setup required before a horse's Vaccinations preventative care can be setup. A horse must be entered in equineGenie, Path – Home: Horses: Information: Identification. The business measurement system preference must have been identified before administering any preventative care, Path – Home: Preferences.

Note: equineGenie will recommend different vaccination vaccine protocols based on a horse's gender, age, postal code location and use. The equineGenie recommendations are from the AAEP expert knowledgebase embedded in the equineGenie system. All vaccination vaccine protocol should be developed in consultation with a licensed equine Veterinarian.

① Select the horse whose vaccinations and vaccines are being setup from the Select Horse dropdown.

② Enter or Select the vaccine used for the vaccination being setup for the selected horse from the Enter / Select Vaccine Type dropdown.

Note (1): The vaccines displayed in the Enter / Select Vaccine Type dropdown are recommendations from the AAEP knowledgebase. The AAEP recommendations are determined from the selected horse's gender, age, postal code location and use. If a vaccine is not displayed in the Enter / Select Vaccine Type dropdown it can be added by selecting [New Vaccine] from the dropdown and entering the new vaccine. The new vaccine will be remembered by equineGenie and will be available for future vaccine selections.

equineGenie does not include any of the multiple vaccines in one vaccination. If you use a multiple vaccine vaccination it can be added and will be remembered by equineGenie.

③ **Select** the frequency of the vaccination from the Frequency dropdown.

Note (2): If the vaccine selected is from the equineGenie/AAEP recommendations in ② the vaccination frequency displayed will be recommended from the AAEP knowledgebase and determined from the selected horse's gender, age, postal code location and use. If the frequency displayed does not match your requirements agreed with a licensed veterinarian than the vaccine should be entered in ②. When a vaccine is entered in ②, multiple vaccination frequency selections are available and displayed in the Frequency dropdown.

④ **Enter** the month you will start administering a vaccine.

Note (3): The start month is the month in which the vaccination is normally administered even if the month has passed. If the vaccination scheduling is being entered after the scheduled month and the vaccination has already been administered select the **Vaccinated Since the Start Month or within the Selected Frequency Interval?** button. Selecting the button will change it from a red **No** to a green **Yes**. If the vaccination has already been administered and the button has been selected, enter the number of times the vaccination has been administered within the identified frequency interval.

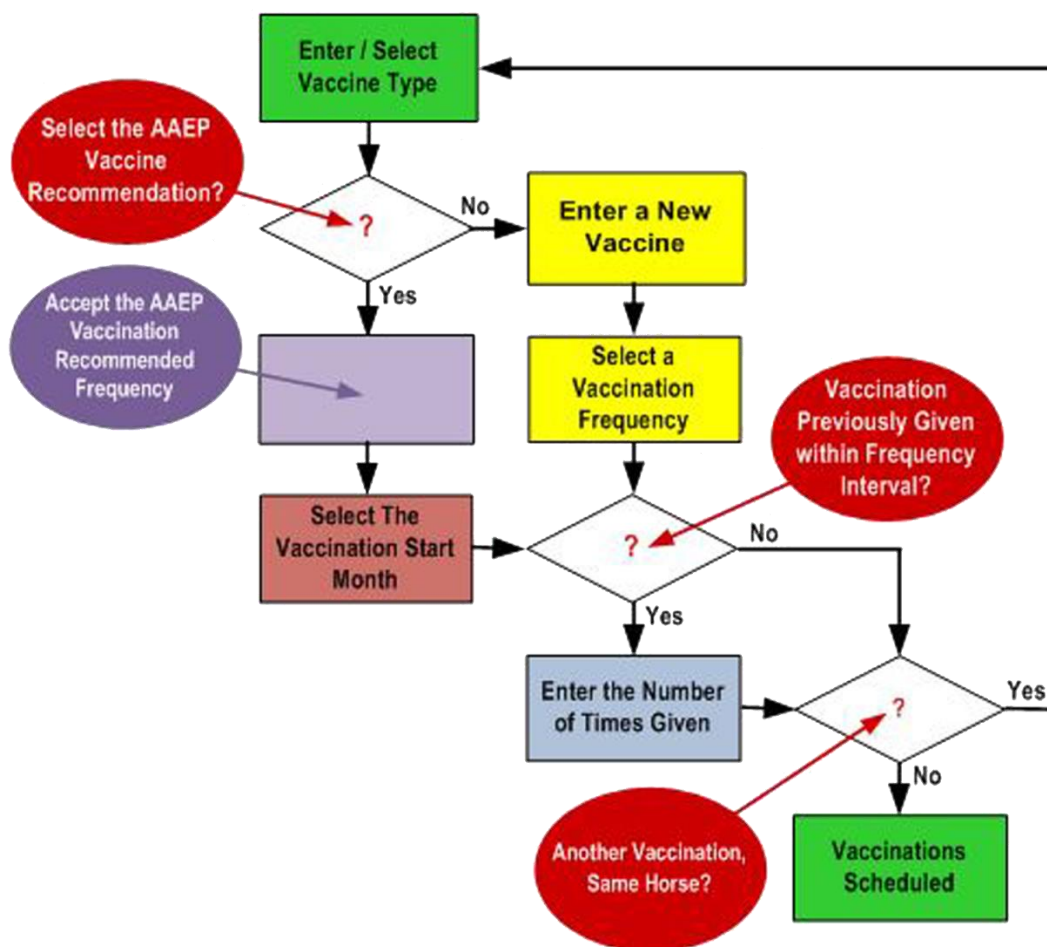
Example: If you select or enter a vaccine that has a Semi Annual schedule and your start month is March and the current month is December, the vaccination should have already been administered twice. By entering the start month of March, selecting **Yes** and entering 2 for the number of times to indicate that the vaccination has been administered twice since March equineGenie will automatically schedule the next vaccination for March 2016.

⑤ If another vaccine type needs to be scheduled for the selected horse select the orange **Another Vaccine Type, Same Horse**. Selection of **Another Vaccine Type, Same Horse** will clear the previous entries except for the selected horse. A new vaccine can be entered following the above instructions until the selected horse's vaccination protocol has been scheduled.

Recommendation: It is recommended that you determine the vaccination schedule and vaccines used in your vaccination protocol with a licensed veterinarian. Vaccinating a

horse and the frequency of a vaccination is very serious and can cause potential harm to a horse. This is particularly true when you are using multiple vaccines in one vaccination.

Vaccination Scheduling Flow



Note (4): Vaccinations schedules for specific vaccines that need to be administered to pregnant mares are automatically determined and scheduled by equineGenie. The vaccination schedule is based on a mare being identified in foal, their days in foal and their foaling date.

Example: If mare is checked in foal equineGenie automatically does the following:

1. Changes the mare's Use/Discipline status from Breeding/Broodmare (Open) to Breeding/Broodmare (pregnant).
2. equineGenie will add the Rhinopneumonitis (EHV-1, Abortion Rhino) vaccine to the recommended vaccine list.
3. equineGenie provides the option of administering the Rhinopneumonitis (EHV-1, Abortion Rhino) at 5, 7 and 9 months and the Rhinopneumonitis (EHV-1/EHV-4) at 300 days gestation. Therefore, the user needs to select the vaccines and their recommended

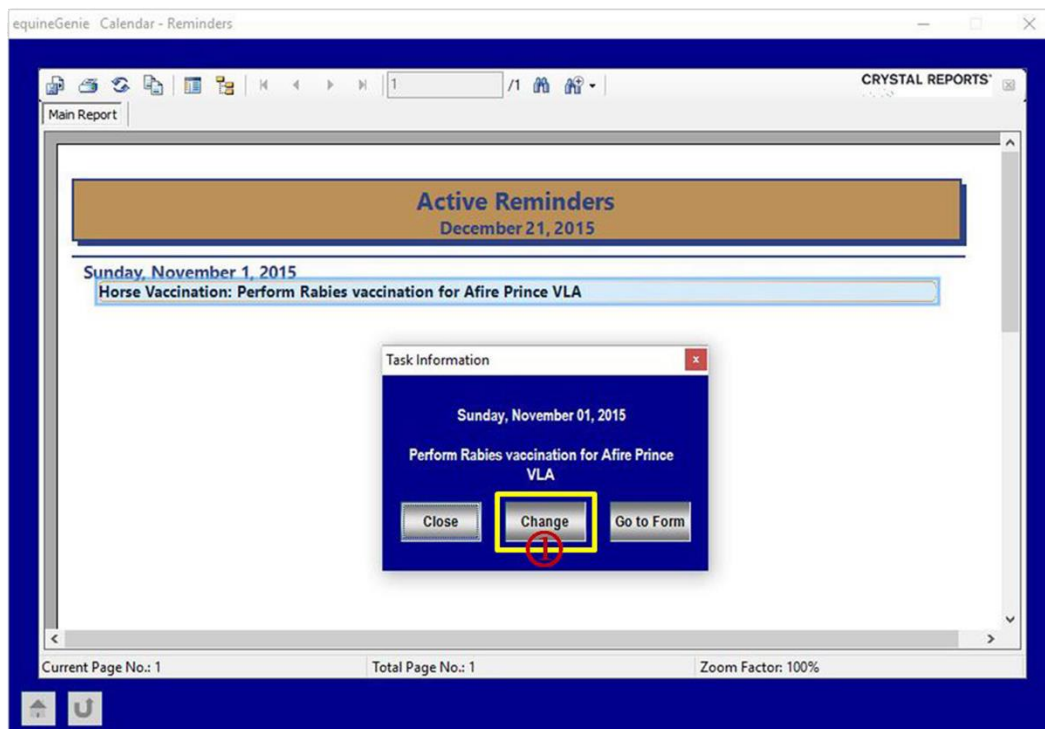
frequency on the vaccination setup screen. Once selected, equineGenie will schedule when they are administered.

4. When the mare foals, equineGenie will change the mare's Use/Discipline status from Breeding/Broodmare (Pregnant) to Breeding/Broodmare (Open).

- ⑥ **If you need to delete a vaccination reminder**, it can be deleted by displaying the vaccination setup and selecting the **Red Delete Vaccination Reminder** button. When the button is selected a **Delete Item** popup will be displayed to make sure you want to delete the reminder.



Note (5): After selecting **OK** on the **Delete Item** popup you need to select the **Enter** button. You can initiate deleting a vaccination reminder from the **Vaccination Setup** screen or by selecting **Change** ① on the Active Reminder screen.



- ⑦ **Enter** any comments or notes associated with the selected horse's Vaccination setup.

- ⑧ **Select Enter before leaving the Vaccination Setup screen.**

- ⑨ **Selecting the Horse Vaccination Schedule** button will display the selected horse's vaccination schedule
- ⑩ **Selecting the All Horse Vaccination Schedule** button will display the vaccination schedule for all the horses that have been setup.
- ① **Selecting the Go To Temp., Wt., Ht. Setup** will display the Horse Temperature, Weight, Height setup screen.
- ② **Selecting the Go To Deworming Setup** button will display the Deworming Setup screen.

[Return to the Table of Content](#)

Preventative Care Setup – Deworming

*The Horse Preventative Care – Deworming Setup screen is used to setup and schedule administering a horse's deworming. An individual plan and schedule can be created for each horse active in the system. **It is a one-time setup unless the user needs to change a previous setup.** Think/Plan before you setup the business's horse deworming dewormer protocol! equineGenie allows for different deworming schedules and therefore, a rotating deworming schedule with different dewormers.*

Path: Home: Horse: Preventative Care: Setup: Deworming.

There is a prerequisite setup required before a horse's Deworming preventative care can be setup. A horse must be entered in equineGenie, Path – Home: Horses: Information: Identification. The business measurement system preference must have been identified before administering any preventative care, Path – Home: Preferences.

All deworming dewormer protocol should be developed in consultation with a licensed equine Veterinarian.

① Select the horse whose deworming is being setup from the Select Horse dropdown.

② Enter or Select the dewormer used for the deworming being setup for the selected horse from the Enter / Select Dewormer Type dropdown.

Note (1): If a dewormer is not displayed in the Enter / Select Dewormer Type dropdown it can be added by selecting [New Dewormer] from the dropdown and entering the new dewormer.

The new dewormer will be remember by equineGenie and will be available for future dewormer selections.

③ **Select** the frequency of the deworming from the Frequency dropdown.

④ **Enter** the month you will start administering a dewormer.

Note (2): The start month is the month in which the dewormer is normally administered even if the month has passed. If a deworming schedule is being entered after the scheduled month and the dewormer has already been administered select the **Dewormed Since the Start Month or within the Selected Frequency Interval?** button. Selecting the button will change it from a red **No** to a green **Yes**. If the dewormer has already been administered and the button has been selected, enter the number of times the dewormer has been administered within the identified frequency interval.

Example: If you select or enter a dewormer that has a Semi Annual schedule and your start month is March and the current month is December, the deworming should have already been administered twice. By entering the start month of March, selecting **Yes** and entering 2 for the number of times to indicate that the dewormer has been administered twice since March equineGenie will automatically schedule the next deworming for March the next year.

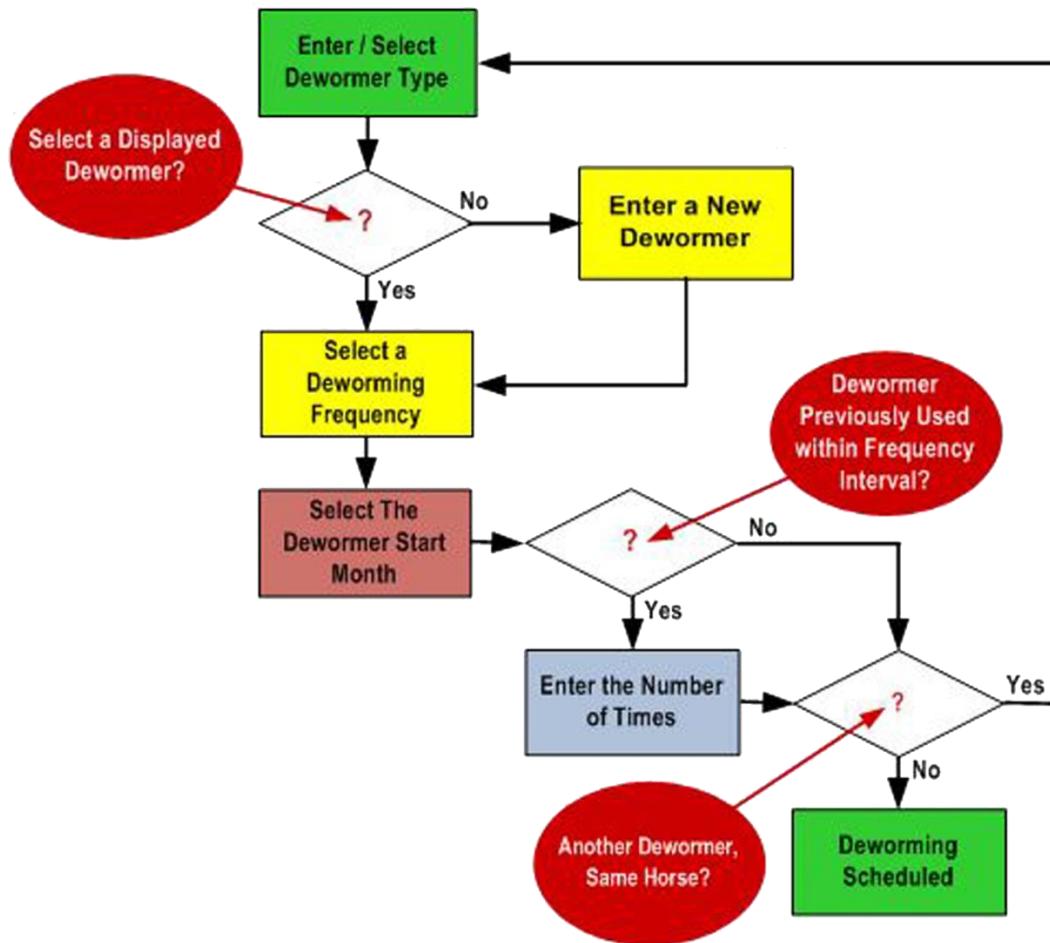
⑤ If another dewormer type needs to be scheduled for the selected horse select the orange **Another Dewormer Type, Same Horse**. Selection of **Another Dewormer Type, Same Horse** will clear the previous entries except for the selected horse. A new dewormer can be entered following the above instructions until the selected horse's deworming dewormer protocol has been scheduled.

Example: In this example equineGenie can schedule a different dewormer every 4 months and generate an automatic reminder when the deworming is due. The scheduled date will auto reset after each deworming unless it is changed or deleted. You only need to enter the **Reminder Month** and a **Frequency of Annual** for each dewormer.

Dewormer Rotation Protocol Setup / Every 4 Months

Current Year		Next Year		Next Year	
Reminder Month	Type of Dewormer Selected	Reminder Month	Type of Dewormer Selected	Reminder Month	Type of Dewormer Selected
January	Ivermectin	January	Ivermectin	January	Ivermectin
Feb - Apr	none	Feb - Apr	none	Feb - Apr	none
May	Equimax	May	Equimax	May	Equimax
Jun -Aug	none	Jun -Aug	none	Jun -Aug	none
September	Panacur	September	Panacur	September	Panacur
Oct - Dec	none	Oct - Dec	none	Oct - Dec	none

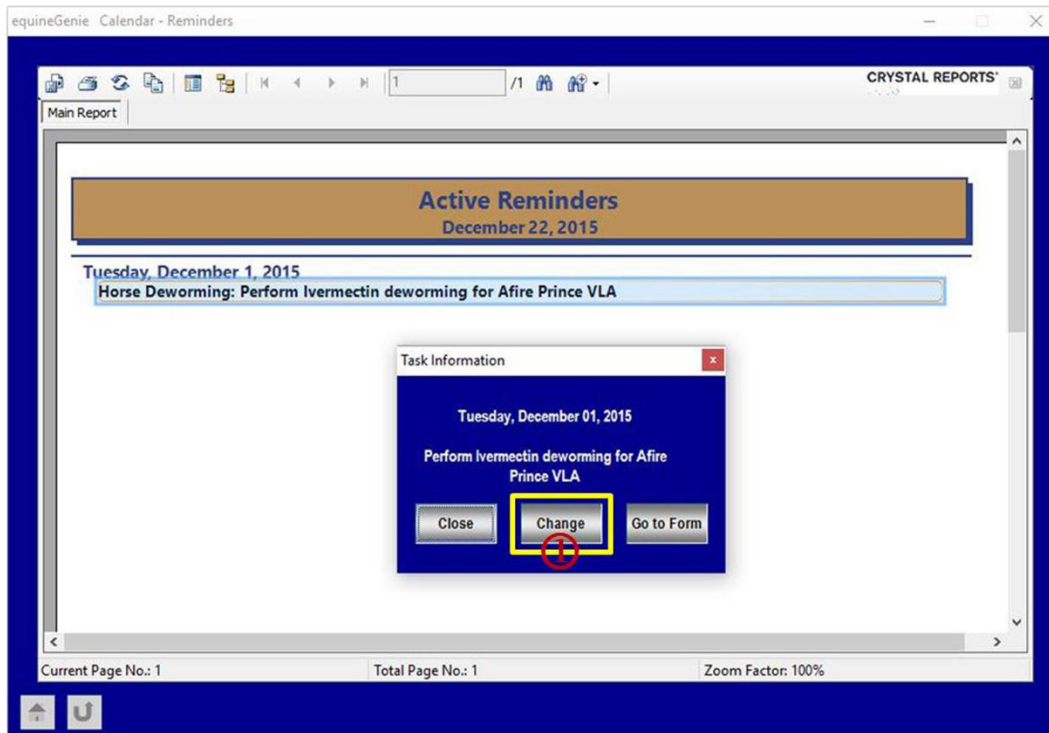
Deworming Scheduling Flow



- ⑥ If you need to delete a deworming reminder, it can be deleted by displaying the dewormer setup and selecting the **Red Delete Deworming Reminder** button. When the button is selected a **Delete Item** popup will be displayed to make sure you want to delete the reminder.



Note (2): After selecting **OK** on the **Delete Item** popup you need to select the **Enter** button. You can initiate deleting a deworming reminder from the **Deworming Setup** screen or by selecting **Change ①** on the Active Reminder screen.



- ⑦ Enter any comments or notes associated with the selected horse's deworming setup.
- ⑧ Select Enter before leaving the Deworming Setup screen.
- ⑨ Selecting the **Horse Deworming Schedule** button will display the selected horse's vaccination schedule
- ⑩ Selecting the **All Horse Deworming Schedule** button will display the vaccination schedule for all the horses that have been setup.
- ① Selecting the **Go To Vaccination Setup** will display the Horse Vaccination setup screen.
- ② Selecting the **Go To Dental Setup** button will display the Dental Setup screen.

[Return to the Table of Content](#)

Preventative Care Setup – Dental

The Horse Preventative Care – Dental Setup screen is used to setup and schedule administering a horse's dental care. An individual plan and schedule can be created for each horse active in the system. **It is a one-time setup unless the user needs to change a previous setup.** Think/Plan before you setup the business's horse dental care! equineGenie allows for different dental care schedules with different dental procedures.

Path: Home: Horse: Preventative Care: Setup: Dental.

There is a prerequisite setup required before a horse's Dental preventative care can be setup. A horse must be entered in equineGenie, Path – Home: Horses: Information: Identification. The business measurement system preference must have been identified before administering any preventative care, Path – Home: Preferences.

① **Select** the horse whose dental procedure is being setup from the Select Horse dropdown.

② **Enter or Select** the dental procedure being scheduled for the selected horse from the Enter / Select Dental Procedure dropdown.

Note (1): If a dental procedure is not displayed in the Enter / Select Dental procedure dropdown it can be added by selecting [New Dental Procedure] from the dropdown and entering the new procedure. The new dental procedure will be remember by equineGenie and will be available for future procedure selections.

③ **Select** how often you want to perform the selected horse's dental procedure from the Frequency dropdown.

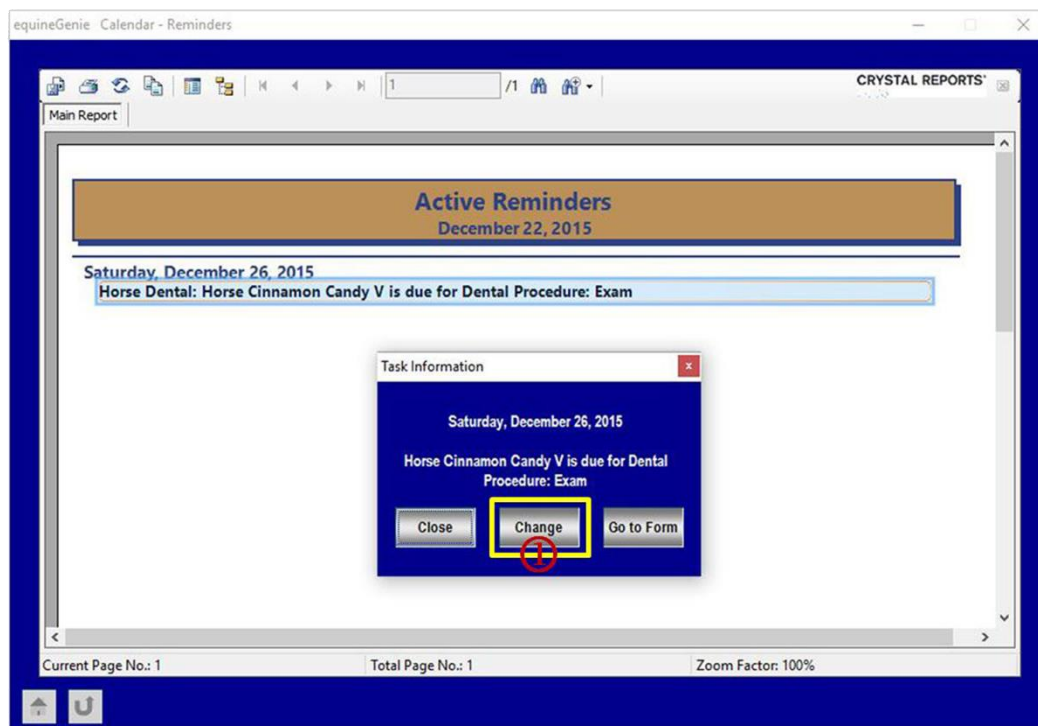
④ **Enter** the previous date the selected horse's dental procedure was done by selecting the date from the calendar icons or entering the date format set in your windows operating system. (mm/dd/yyyy or dd/mm/yyyy).

Note (2): equineGenie uses the frequency ③ and the previous date ④ to set an automatic reminder trigger for the next time the selected horse's dental procedure needs to be done.

⑤ **If you need to delete a dental reminder**, it can be deleted by displaying the dental procedure setup and selecting the **Red Delete Dental Reminder** button. When the button is selected a **Delete Item** popup will be displayed to make sure you want to delete the reminder.



Note (2): After selecting **OK** on the **Delete Item** popup you need to select the **Enter** button. You can initiate deleting a dental reminder from the **Dental Setup** screen or by selecting **Change** ① on the Active Reminder screen.



- ⑥ **Enter** any comments or notes associated with the selected horse's dental setup.
- ⑦ **Select Enter before leaving the Dental Setup screen.**
- ⑧ **Selecting the Horse Dental Schedule** button will display the selected horse's dental procedure schedule.
- ⑨ **Selecting the All Horse Dental Schedule** button will display all the horses dental procedure schedule.
- ⑩ **Selecting the Go To Deworming Setup** left arrow will display the Deworming setup screen.
- ① **Selecting the Go To Farrier Setup** right arrow will display the Farrier setup screen.

[Return to the Table of Content](#)

Preventative Care Setup – Farrier

The Horse Preventative Care – Farrier Setup screen is used to setup and schedule a horse's farrier work. An individual plan and schedule can be created for each horse active in the system. *It is a one-time setup unless the user needs to change a previous setup.* Think/Plan before you setup the business's horse farrier work! equineGenie allows for different farrier work schedules with different farrier work procedures.

Path: Home: Horse: Preventative Care: Setup: Farrier.

There are prerequisite setups required before a horse's Farrier Work can be setup. A horse must be entered in equineGenie, Path – Home: Horses: Information: Identification. The business's farriers need to be entered in equineGenie, Path – Home: Horses: Horse Care Providers: Farrier and Farrier Specialist. The business measurement system preference must have been identified before administering any preventative care, Path – Home: Preferences.

equineGenie Horse Preventative Care - Farrier Setup

Farrier Setup

Select Horse ①

Farrier Procedure ② Frequency ③

Farrier ④

Shoe Type
Shoe Size
Shoe Weight ⑤
Front Angle
Rear Angle
Hoof Length

Previous Date Date initial ⑥ setup only

Delete Farrier Reminder ⑦

Horse Farrier Schedule ⑩

Farrier Setup Comments

Enter ⑨

Popup And Red Flag
equineGenie
Notes

All Horse Farrier Schedule ①
Go To Dental Setup ②

① **Select** the horse whose farrier work is being setup from the Select Horse dropdown.

② **Enter or Select** the farrier work procedure being scheduled for the selected horse from the Farrier Procedure dropdown.

Note (1): If a farrier procedure is not displayed in the Farrier Procedure dropdown it can be added by selecting [New Farrier Procedure] from the dropdown and entering the new procedure. The new farrier procedure will be remember by equineGenie and will be available for future procedure selections.

③ **Select** how often you want to perform the selected horse's farrier work procedure from the Frequency dropdown.

④ **Select** the farrier who will perform the farrier work procedure from the Farrier dropdown.

Note (2): The farriers available for selection should have been previously entered on the Horse Care Providers screen, [Path – Home: Horses: Horse Care Providers: Farrier and Farrier Specialist](#). If necessary, the identified farrier can be changed when the actual farrier work procedure is performed. However, it is good business practice to identify a farrier in advance for scheduling, management and allocation purposes.

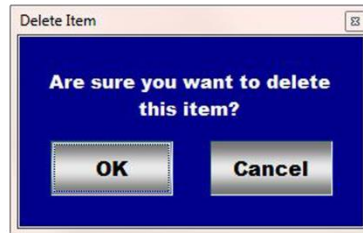
⑤ **Enter or Select** the farrier work shoeing, hoof angle and hoof length parameters from the respective dropdowns.

- **Shoe Type** – If the selected horse is being shod select the shoe type from the shoe types displayed in the dropdown or enter a new shoe type. If a new shoe type is entered it will be remembered by equineGenie for future selection.
- **Shoe Size** – If the selected horse is being shod select the shoe size from the shoe sizes displayed in the dropdown or enter a new shoe size. If a new shoe size is entered it will be remembered by equineGenie for future selection.
- **Shoe Weight** – If the selected horse is being shod select the shoe weight from the shoe weights displayed in the dropdown or enter a new shoe weight. If a new shoe weight is entered it will be remembered by equineGenie for future selection.
- **Front Angle** – If the selected horse's front hoof angles need to be recorded select the front hoof angle from the angles displayed in the dropdown or enter a new hoof angle. If a new front angle is entered it will be remembered by equineGenie for future selection.
- **Rear Angle** – If the selected horse's rear hoof angles need to be recorded select the rear hoof angle from the angles displayed in the dropdown or enter a new hoof angle. If a new rear angle is entered it will be remembered by equineGenie for future selection.
- **Hoof length** – If the selected horse's hoof length need to be recorded select the hoof length from the lengths displayed in the dropdown or enter a new hoof length. If a new length is entered it will be remembered by equineGenie for future selection.

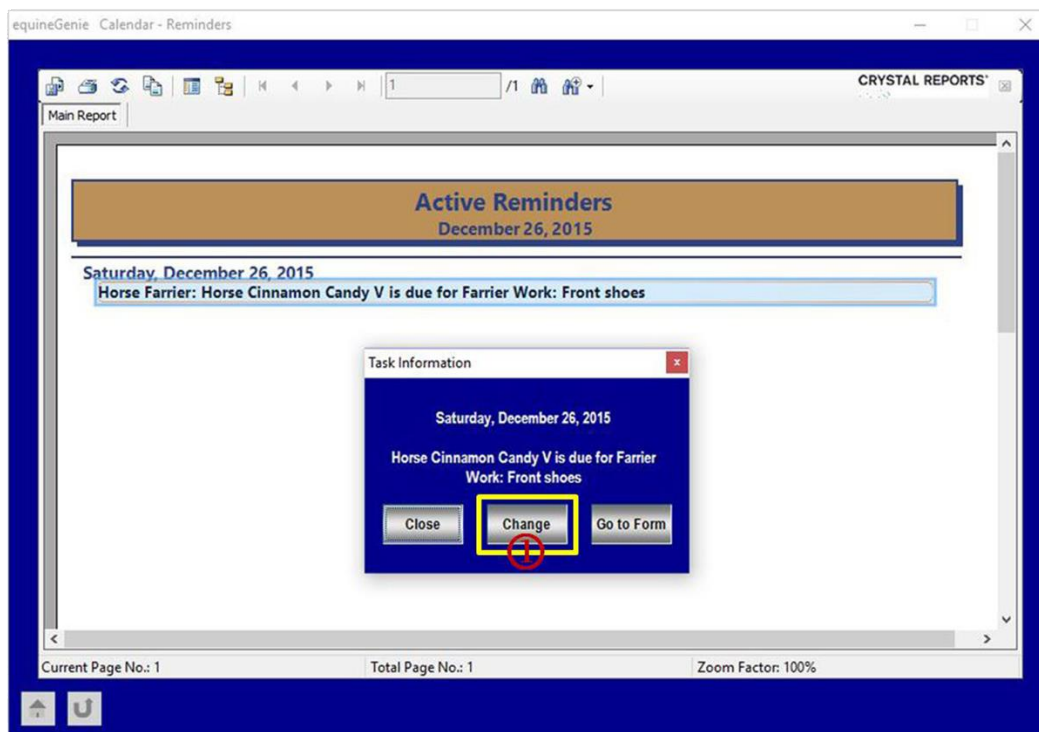
⑥ **Enter** the previous date the selected horse's farrier work procedure was done by selecting the date from the calendar icons or entering the date format set in your windows operating system. (mm/dd/yyyy or dd/mm/yyyy).

Note (2): equineGenie uses the frequency ③ and the previous date ⑥ to set an automatic reminder trigger for the next time the selected horse's farrier work procedure needs to be done.

- ⑦ If you need to delete a farrier reminder, it can be deleted by displaying the farrier work procedure setup and selecting the **Red Delete Farrier Reminder** button. When the button is selected a **Delete Item** popup will be displayed to make sure you want to delete the reminder.



Note (2): After selecting **OK** on the **Delete Item** popup you need to select the **Enter** button. You can initiate deleting a farrier reminder from the **Farrier Setup** screen or by selecting **Change** ① on the Active Reminder screen.



- ⑧ **Enter** any comments or notes associated with the selected horse's farrier setup.
- ⑨ **Select Enter before leaving the Dental Setup screen.**
- ⑩ **Selecting the Horse Farrier Schedule** button will display the selected horse's farrier work procedure schedule.

- ① **Selecting** the **All Horse Farrier Schedule** button will display all the horses farrier work procedure schedule.
- ② **Selecting** the **Go To Dental Setup** right arrow will display the Dental setup screen.

[Return to the Table of Content](#)