

APRIL 15, 2014 - JUNE 22, 2014

SELECT COLLECTION PRINTS OF ROMARE BEARDEN

On April 26, 2014, Greenhill will host an educational program which is free + open to the public:

10:00 - 11:30 AM: Romare Bearden in Context

Who was Romare Bearden, what was his role in 20th Century contemporary art, what was his influence in and outside of the arts?

1:30 - 3:00 PM: The Prints of Romare Bearden

Discussion focused on examining the wide array of his prints, helping to articulate to viewers the experimentation, adaptation, and improvisation found in his prints.

Discussion Participants

Alison Fleming, *Associate Professor and Chair, Department of Art + Visual Studies, Winston-Salem State University*

Diedra Harris-Kelley, *Co-Director of Romare Bearden Foundation, New York, NY*

Janet Wall, *Chief Researcher on the Catalogue Raisonne Project of Graphic Works by Romare Bearden, Jerald Melberg Gallery, Charlotte, NC*

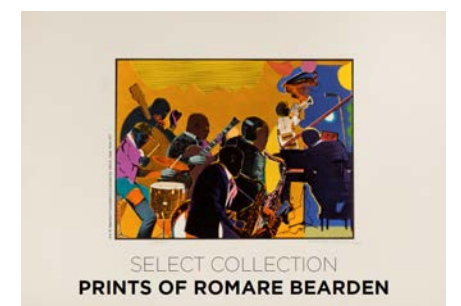
About *Select Collection* at Greenhill

Select Collection (April 15 - June 22, 2014) is an exhibition and art sale at Greenhill celebrating one collector and his extraordinary collection of Romare Bearden etchings, screenprints, lithographs, bon à tires, drawing and collage. On display will be over 40 of his works with 83 works available for sale. Romare Bearden was a seminal African American artist and is recognized as one of America's most important 20th century artists.

An exhibition catalogue is available for view online + **Register for the programs at greenhillnc.org**

- click on -

SELECT COLLECTION



Romare Bearden, *The Lantern*, 1979, lithograph, image 23 5/8 x 15 3/8 inches | Art © Bearden Foundation/Licensed by VAGA, New York, NY